

VESTIL MANUFACTURING CORP.
2999 N. Wayne St., Angola, IN 46703
Ph: 260-665-7586 · Fax: 260-665-1339
E-mail: sales@vestil.com · Website: www.vestil.com

OWNER'S MANUAL

MODELS DCR-800-M, -H, & -H-HP

Serial number _____

Operation Instructions	2	Troubleshooting	6
Routine Maintenance & Safety Checks	3	Safety & Information Label Identification	7
Exploded Structural Parts Drawing & BOM	4-5	Warranty	8

IMPORTANT NOTES, WARNINGS AND SAFETY INSTRUCTIONS

Ensure that all employees understand and follow the following.

- ☞ Failure to read and understand this owner's manual before using or servicing the drum carrier constitutes a misuse of the product. All persons who will install, use, or care for this product must be familiar with this material.
- The drum must be removed before any work is performed on the drum carrier.
- Ensure that all information / safety / warning labels stay in place and remain legible.
- Do not use the drum carrier if any damage or unusual motion is observed.
- The drum carrier is intended for use only on compacted, improved surfaces.
- Do not use brake fluid or jack oils in the hydraulic system. If oil is needed, use an anti-wear hydraulic oil with a viscosity grade of 150 SUS at 100°F, (ISO 32 cSt @ 40°C), or Dexron transmission fluid.
- Contact the manufacturer for any needed MSDS information.
- ◆ Do not perform any modifications to the drum carrier without the manufacturer's approval. Failure to receive authorization for changes to the equipment could void the warranty.
- ◆ Maintenance and repairs are to be done only by personnel qualified to perform the required work. Consideration will not be given for warranty repair charges without prior written authorization by the manufacturer.

WHEN ORDERING

REPLACEMENT PARTS:

We take pride in using quality parts on the equipment we manufacture. We are not responsible for equipment problems resulting from the use of unapproved replacement parts.

To order replacement or spare parts for this equipment, contact the factory.

In any communication with the factory please be prepared to provide the machine's serial number, which is indicated on the machine dataplate.

RECEIVING INSTRUCTIONS

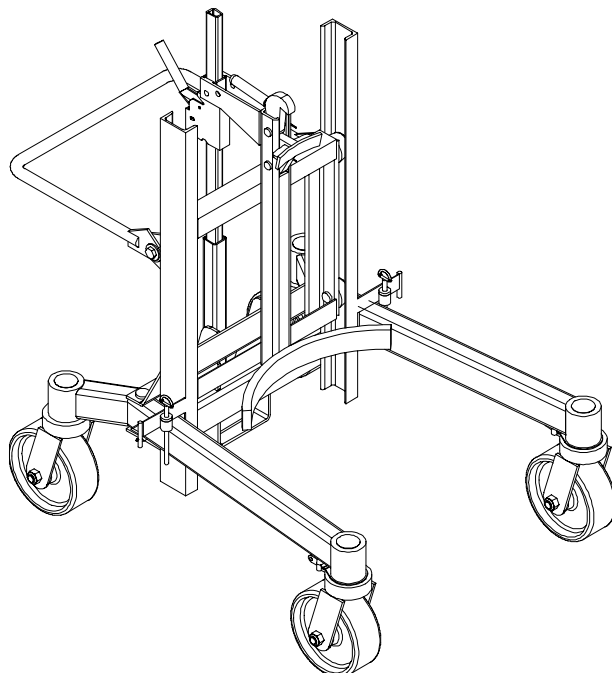
It is possible that this product could incur damage by the freight carrier.

Inspect the unit closely when it arrives. *If you see evidence of damage or rough handling to either the packaging or to the product when it is being unloaded, immediately make a note of it on the Bill Of Lading!*

It is important that you remove the product's packaging upon its arrival to ensure that there is no concealed damage or to enable a timely claim with the carrier for freight damage.

Also verify that the product and its specifications are as ordered.

DCR-880-M



OPERATION INSTRUCTIONS – DCR-880 (ALL MODELS)

- *Ensure that all employees involved in the operation of this drum carrier understand and follow these instructions!*

The standard model DCR-880 drum carrier is suitable for use indoors in industrial and commercial locations. It is intended to be used to vertically transport 55-gallon steel, plastic, and fiber drums that have a top lid.

The DCR-880-M and the DCR-880-H both have a service range of 27" to 47" (at the gripper jaw height). The DCR-880-H-HP has a service range of 27" to 74".

Loading:

The load rating, in pounds, is shown on the machine dataplate located on the carriage mast. It indicates the net capacity of the drum carrier on a flat, level, improved surface.

The load rating of the DCR-880-M and DCR-880-H-HP is 880 pounds, and the DCR-880-H is rated at 1,500 pounds.

Warning: Do not exceed the drum carrier's load ratings. Injury to personnel or permanent damage to the drum or the drum carrier could result from exceeding the listed capacity.

- ◆ To pick up a drum (the drum must have a top lid):

Push the carrier up close to the drum, with the straddle legs around the drum.

Note: the legs will rotate outward to allow for access to drums on a pallet.

Operate the mechanical lever or the foot pump to position the carrier's drum rim support bracket directly underneath the drum's top rolled rim.

Push the carrier up against the drum, then operate the jack's ratchet handle or the pump's foot treadle to raise the rim support bracket until it contacts the underside of the drum's top rim. Rotate the drum hook forward so that it rests on the top lid of the drum.

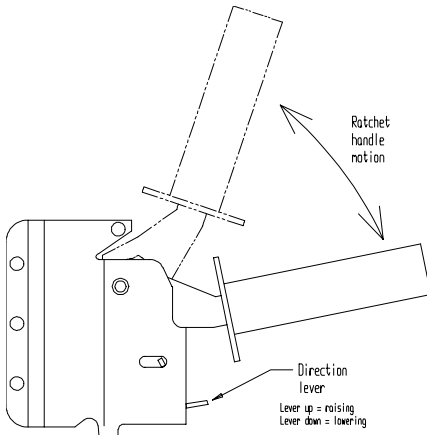
Operation:

Caution: Always carefully watch the drum carrier and the drum loaded onto it when being raised or transported.

Caution: Do not exceed a rate of two feet per second when transporting drums.

Caution: Do not raise a drum higher than is necessary to transport it.

The drum carrier will hold a drum at any height in its travel range.



For units with a mechanical ratcheting jack:

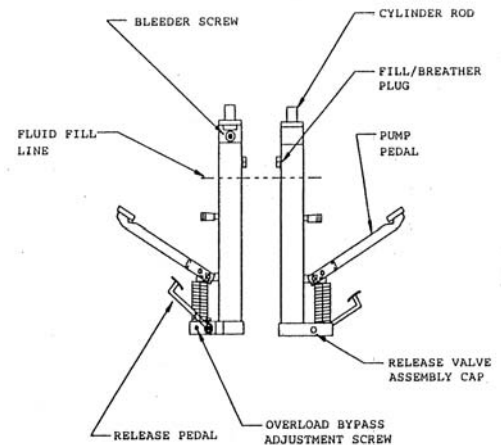
The drum carrier's push handle can be folded down to allow easier access to the ratchet handle.

To raise the drum carrier, the ratchet direction lever must be in the higher position. Raise the handle lever, then push it downward until a click is heard and felt. Repeat this process until the carrier is at the desired height.

To lower the drum carrier, flip the ratchet direction lever to the lower position. Push the handle lever downward firmly, then allow the lever to raise upward until it stops and you hear the ratchet click. Raise the lever a bit more and allow the lever to drop downward. Repeat these steps until the drum carrier is at the desired height.

For units with a hydraulic foot pump (DCR-880-H and DCR-880-H-HP):

Repeatedly pressing the foot pump's foot treadle will raise the drum carrier. Stepping on the small lever on the side of the foot pump will open the lowering valve to allow the drum carriage to lower. Releasing the pedal will stop the carriage movement, and the carriage will hold its position.



Caution: Never use the drum carrier if any damage or unusual noise is observed, if it is in need of repairs, or if it seems to be malfunctioning. Notify your supervisor or maintenance personnel if you notice anything out of the ordinary.

Ensure that all safety and warning labels stay in place and are legible. Refer to the labels page in this manual.

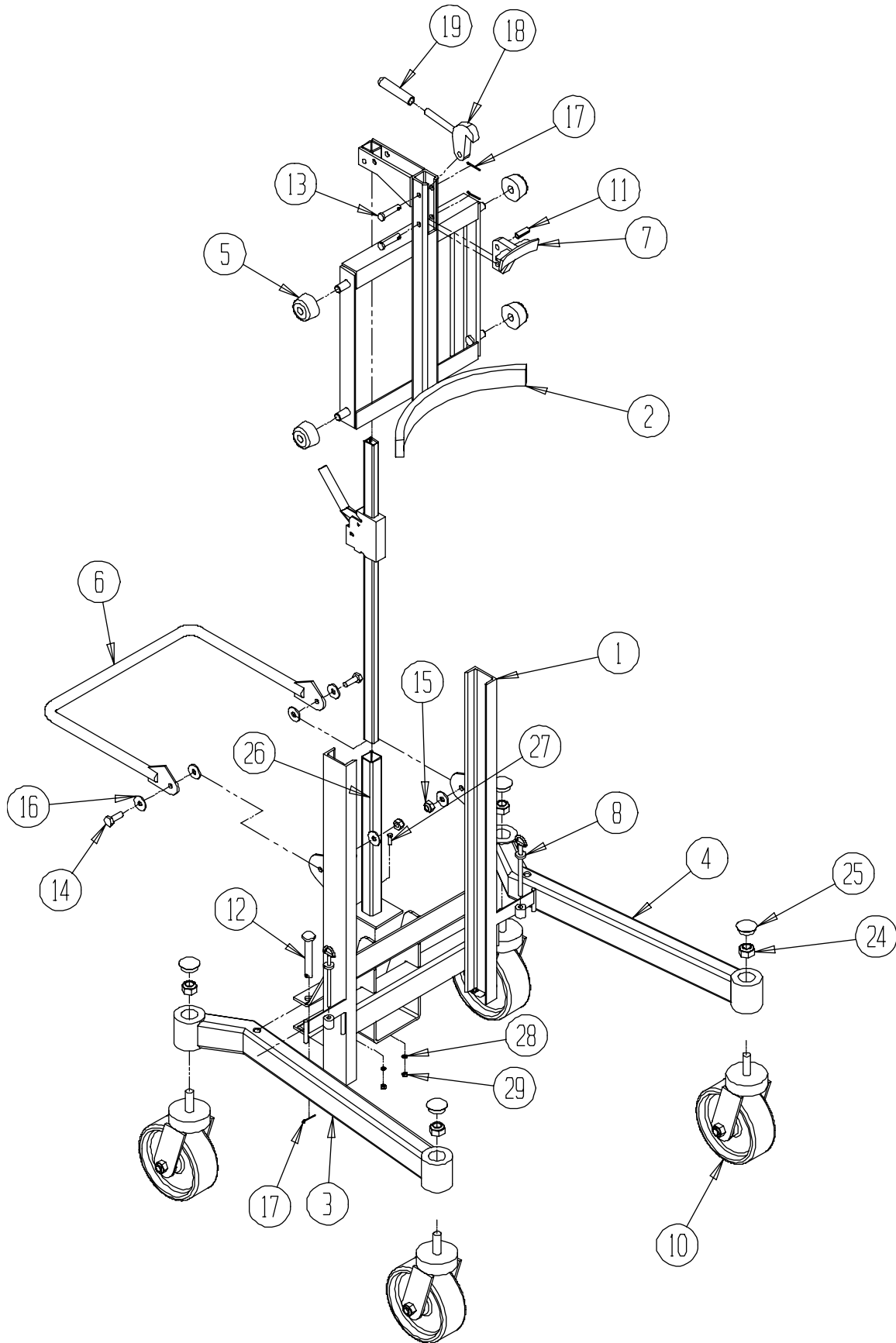
ROUTINE MAINTENANCE & SAFETY CHECKS – DCR-880-M, -H, & -H-HP MODELS

- *Warning: Care should be taken to identify all potential hazards and comply with applicable safety procedures before beginning work.*
 - *Warning: Fully lower the drum carriage and hold the lowering valve open for two seconds to release all hydraulic system pressure before beginning any inspections or work on the unit.*
 - *Only qualified individuals trained to understand mechanical devices and their associated hydraulic pump circuits should attempt troubleshooting and repair of this equipment*
- (A) Before each use inspect for the following:
- 1.) Oil leaks (-H models only)
 - 2.) Damage or structural deformation to the structural members, the lifting jack, the cylinder brackets, etc.
 - 3.) Unusual noise or binding, or evidence thereof.
 - 4.) Proper functioning of the lifting jack (-M model only).
- (B) Inspect monthly for:
- 1.) The oil level. (-H models only.) Oil should be 1" below the reservoir's fill hole with the carriage in the fully lowered position. See below for the hydraulic oil specification.
 - 2.) Rollers' looseness and wear.
 - 3.) Integrity of the retaining hardware on all rollers and on all pivot point pins.
 - 4.) Looseness, wear, or damage to the casters' bearings, mounting hardware, or surface material.
 - 5.) Proper functioning of the beak mechanism.
 - 6.) Unusual noises or movement during operation.
 - 7.) All the information, safety, and warning labels being in place and in good condition.
 - 8.) The need to clean off dirt and debris.

The oil should be changed if the oil darkens, becomes gritty, or turns a milky color (indicating the presence of water). Replace with an anti-wear hydraulic oil with a viscosity grade of 150 SUS at 100°F, (ISO 32 at 40°C). Ex: AW 32 or HO 150 hydraulic oil, or a non-synthetic transmission fluid. You may use a synthetic transmission fluid if you flush the system with the synthetic fluid before filling the reservoir.

EXPLODED PARTS VIEW -- DCR-880-M & -H MODELS

(DCR-880-M shown)



BILL OF MATERIALS -- DCR-880-M & -H MODELS

Item #:	Description	Part number	Qty.
1	40-514-028	Weldment, frame	1
2	40-538-001	Weldment, carriage	1
3	40-514-029	Weldment, leg, right side	1
4	40-514-030	Weldment, leg, left side	1
5	21-527-003	Assembly, roller bearing	4
6	40-525-001	Weldment, handle	1
7	40-516-001	Weldment, bracket	1
8	40-537-001	Weldment, leg position detent	2
9	N/A	--	--
10	16-132-181	Caster, 8" x 2" phenolic w/ 3/4"-10 UNC stem	4
11	A/L	Pin, spring, 1/2"Ø x 1 1/2" long	1
12	A/L	Pin, clevis, 3/4"Ø x 4 1/2" long	2
13	A/L	Pin, clevis, 1/2"Ø x 2" long	2
14	A/L	Bolt, hex, 1/2"-16 UNC x 1 1/2" long	2
15	A/L	Nut, hex, nylock, 1/2"-16 UNC	2
16	A/L	Washer, flat, 1/2" I.D.	6
17	A/L	Pin, cotter, 3/16"Ø x 1 1/2" long	4
18	40-516-004	Weldment, beak bracket	1
19	A/L	Grip, handle, for 5/8"Ø	1
20	CBJ-35	Jack, 35" long	1
21	FHJ-C-1-18	Assembly, foot pump/cylinder, -H model (not shown)	1
	FHJ-C-1-24	Assembly, foot pump/cylinder, -H-HP model (not shown)	1
22	N/A	--	--
23	N/A	--	--
24	A/L	Nut, hex, nylock, 3/4"-10 UNC	4
25	A/L	Cap, plastic, for 1 5/8"Ø hole	4
26	40-516-006	Weldment, bracket, jack mount	1
27	A/L	Bolt, hex, 1/4"-20 UNC x 2" long	2
28	A/L	Washer, flat, 1/4" I.D.	2
29	A/L	Nut, hex, nylock, 1/4"-20 UNC	2

TROUBLESHOOTING GUIDE -- DCR-ALL MODELS

Warning: Before performing any troubleshooting or repair task, always lower the drum fully to the floor. Consult the factory for problems at time of installation, or for any problems not addressed below.

<u>Problem:</u>	<u>Possible cause(s):</u>	<u>Action:</u>
Cannot pick up plastic drums.	The drum hook is slipping off the drum's top rim.	Contact the manufacturer for a drum hook retainer device.

TROUBLESHOOTING GUIDE -- DCR-880-H & -HP

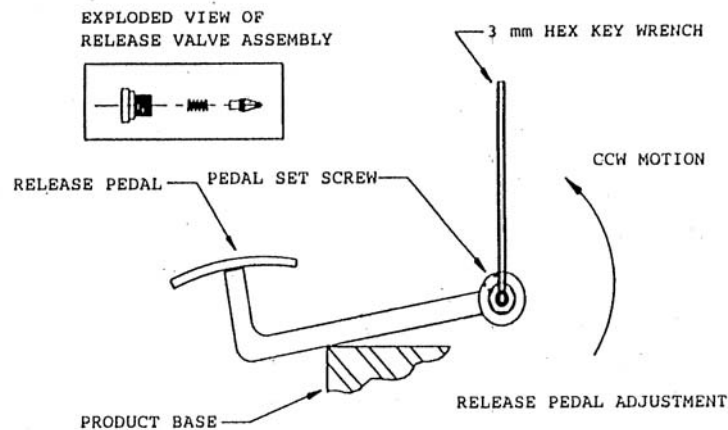
Warning: Before performing any troubleshooting or repair task, always lower the drum fully to the floor. Purge all hydraulic pressure from the foot pump by holding the release open for two seconds once the drum is lowered to the floor.

If the foot pump is exhibiting symptoms such as--

- o not extending the cylinder rod when the foot treadle is pumped;
- o raises and lowers the cylinder rod with each stroke of the foot pump treadle, or;
- o the carrier drifts down on its own --

perform the following actions, in order.

- Check the fluid level by removing the fill / breather plug and inserting a clean, flexible object (such as a cable tie, a wire, or a twist tie) downward in the wall of the cylinder assembly. The fluid level should be approximately 2" below the fill hole when the carrier is fully lowered.
- Hold the release pedal down as far as it will go and pump the foot treadle rapidly. This will help to create turbulence inside the pump, which could help to flush off any potential speck of contamination that might be preventing one of the check balls from seating properly.
- Adjust the release pedal so that it allows the valve to close completely. Consult the figure below. Loosen the pedal setscrew. While holding the release pedal, use a hex key wrench to turn the release shaft counter-clockwise until it stops. (Do not loosen the locking nut on the release pedal shaft.) Tighten the pedal's setscrew and release the pedal.



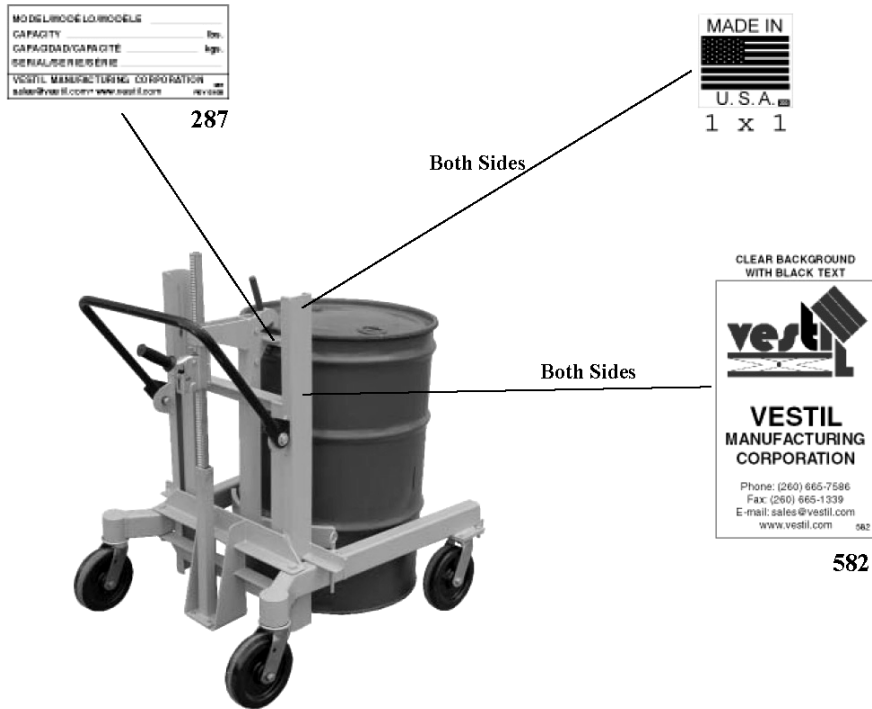
- Clean the release valve by removing the release valve cap and assembly (shown in the above figure). With the components removed, pump the foot pedal several times. Fluid will discharge from the port and should dislodge any foreign material. Reassemble the components and cap. Replace the lost fluid if necessary.

The hydraulic pump assembly utilizes HO150 hydraulic fluid. Any anti-wear hydraulic fluid with a viscosity grade of 150 SUS at 100°F (ISO 32 @ 40°C) such as AW 32 or Dexron transmission fluid is acceptable.

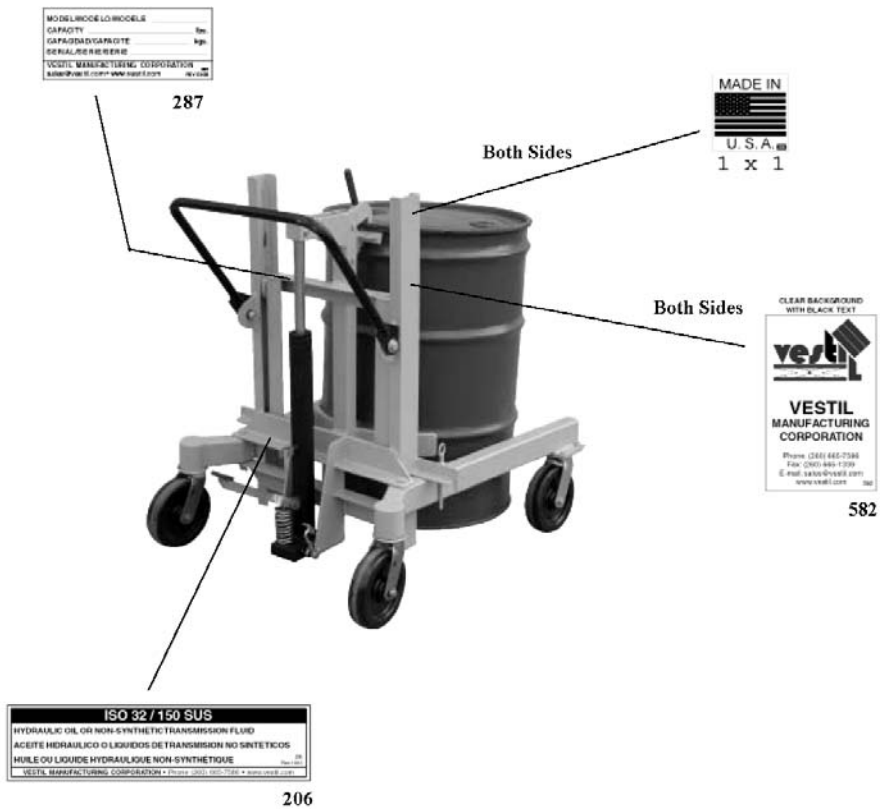
SAFETY & INFORMATION LABEL IDENTIFICATION

* Product safety signs or labels should be periodically inspected and cleaned by the product users as necessary to maintain good legibility for safe viewing distance -- ANSI 535.4 (10.21). Contact the manufacturer for replacement labels.

DCR-880-M



DCR-880-H, -HP



POWERED PRODUCTS' WARRANTY

90 DAY LIMITED WARRANTY

For the original purchaser, the manufacturer warrants this product against defects in materials and workmanship resulting from normal use for 90 days after the date of shipment (not to exceed 120 days after the date of manufacture). Any part that is determined by the manufacturer to be defective in material or workmanship and returned to the factory, shipping costs prepaid, will be, as the exclusive remedy, repaired or replaced at our option. Labor costs for warranty repairs and/or modifications are not covered unless pre-approved by the manufacturer or done at the manufacturer's facilities. Any modifications performed without prior written approval of the manufacturer may void warranty. This limited warranty gives purchaser specific legal rights which vary from state to state. All specifications are subject to change without notice.

LIMITATION OF LIABILITY

To the extent allowable under applicable law, the manufacturer's liability for consequential and incidental damages is expressly disclaimed. The manufacturer's liability in any event is limited to, and shall not exceed, the purchase price paid. Misuse or modification may void warranty.

Warranty does not cover labor or consequential damages including, but not limited to, business interruption costs, lost profits, or lost business opportunities.

WARRANTY DISCLAIMER

The manufacturer has made a diligent effort to accurately illustrate and describe their products. However, such illustrations and descriptions are for the sole purpose of identification, and do not express or imply a warranty that the products are merchantable or fit for a particular purpose, or that the products will necessarily conform to the illustrations or descriptions.

The provisions of the warranty shall be construed and enforced in accordance with the Uniform Commercial Code and laws as enacted in the State of Indiana.

DISPOSITION

Our company will make a good faith effort for prompt correction or other adjustment with respect to any product that proves to be defective within the Limited Warranty Period. Warranty claims must be made in writing within said year.