

OWNER'S MANUAL

TIE ROD, WALL & FLOOR MOUNTED JIBS Model JIB-HC, JIB-LC, JIB-FM

Contents

Warnings and Safety Instructions	1	Installation Instructions for Wall Jibs	4
Receiving Instructions	1	Installation Instructions for Floor Jibs	5-8
Warranty	1	Warning Labels	9
Inspection Instructions	2	Material Safety Data Sheets	10-11
Installation Instructions for Tie Rod Jibs	3	Material Handling Problem Solvers	12

WARNINGS & SAFETY INSTRUCTIONS

Read owner's manual completely before operating unit!

- Keep clear when operating.
- Never go under unit if there is weight on unit.
- Remove weight before working on unit.
- Always inspect unit before each use.
- Never use if unit is damaged.
- Never lift more than the rated capacity.
- Never mount unit near electrical lines.
- When mounting this unit be sure supporting surface is sufficient.
- Make sure all operator safety labels are in place.

RECEIVING INSTRUCTIONS

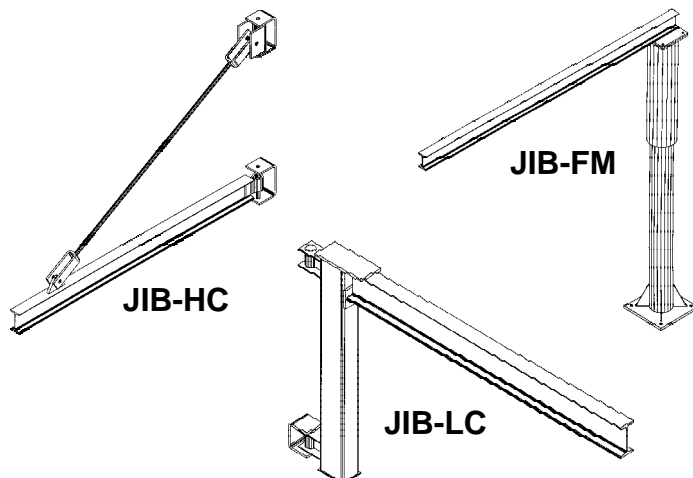
Every unit is thoroughly tested and inspected prior to shipment. However, it is possible that the unit may incur damage during transit. If you see damage when unloading make a note of it on the SHIPPER RECEIVER.

Remove all packing and strapping material, inspect for damage. IF DAMAGE IS EVIDENT, FILE A CLAIM WITH THE CARRIER IMMEDIATELY! Also, check the platform size, type of power unit, etc., to see that the unit is correct for the intended application.

WARRANTY

This product is warranted for 90 DAYS from date of purchase to be free of manufacturing defects in material and workmanship. The manufacturer's obligation hereunder is limited to repairing such products during the warranty period, provided the product is sent prepaid back to the factory.

This warranty does not cover normal wear of parts or damage resulting from any of the following: negligent use or misuse of the product, use or application contrary to installation instructions, or disassembly, repair or alteration by any person prior to authorization from a factory representative.



INSPECTION INSTRUCTIONS

Per OSHA Regulations **1910.179** all gantry cranes/jibs should have an:

1910.179(j)(1)(i) Initial inspection - Prior to initial use all new and altered cranes shall be inspected to insure compliance.

Besides that, for gantry cranes in regular service, there are two general classifications of inspections based upon the intervals at which the inspection should be performed. The intervals in turn are dependent upon the nature of the critical components of the crane and the degree of their exposure to wear, deterioration, or malfunction. The two general classifications are herein designated as "frequent" and "periodic" with respective intervals between inspections as defined below:

1910.179(j)(1)(ii)(a) Frequent inspection - Daily to monthly intervals.

1910.179(j)(1)(ii)(b) Periodic inspection - 1 to 12 month intervals.

1910.179(j)(2) Frequent Inspection

The following items shall be inspected for defects at intervals as defined above or as specifically indicated, including observation during operation for any defects which might appear between regular inspections. All deficiencies such as listed shall be carefully examined and determination made as to whether they constitute a safety hazard:

- All functional operating mechanisms for maladjustment interfering with proper operation. Daily.
- Hooks with deformation or cracks. Visual inspection daily; monthly inspection with a certification record which includes the date of inspection, the signature of the person who performed the inspection and the serial number, or other identifier, of the hook inspected.
- Hoist chains, including end connections, for excessive wear, twist, distorted links interfering with proper function, or stretch beyond manufacturer's recommendations. Visual inspection daily; monthly inspection with a certification record which includes the date of inspection, the signature of the person who performed the inspection and an identifier of the chain which was inspected.
- All functional operating mechanisms for excessive wear of components.
- Rope reeving for noncompliance with manufacturer's recommendation.

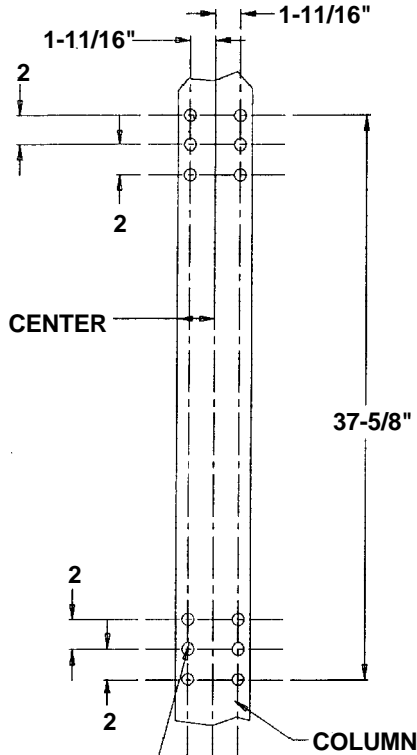
1910.179(j)(3) Periodic Inspection

Complete inspections of the crane shall be performed at intervals as generally defined above, depending upon its activity, severity of service, and environment, or as specifically indicated below. These inspections shall include the requirements of the frequent inspection stated above and in addition, the following items. All deficiencies such as listed shall be carefully examined and determination made as to whether they constitute a safety hazard:

- Deformed, cracked, or corroded members.
- Loose bolts or rivets.
- Cracked or worn sheaves and drums.
- Worn, cracked or distorted parts such as pins, bearings, shafts, gears, rollers, locking and clamping devices.
- Excessive wear on brake system parts, linings, pawls, and ratchets.
- Load, wind, and other indicators over their full range, for any significant inaccuracies.
- Gasoline, diesel, electric, or other powerplants for improper performance or noncompliance with applicable safety requirements. (IF APPLICABLE)
- Excessive wear of chain drive sprockets and excessive chain stretch.

TIE ROD JIB (FOR HIGH CEILINGS)

Model JIB-HC-3-89, JIB-HC-6-89, JIB-HC-10-89 & JIB-HC-20-89



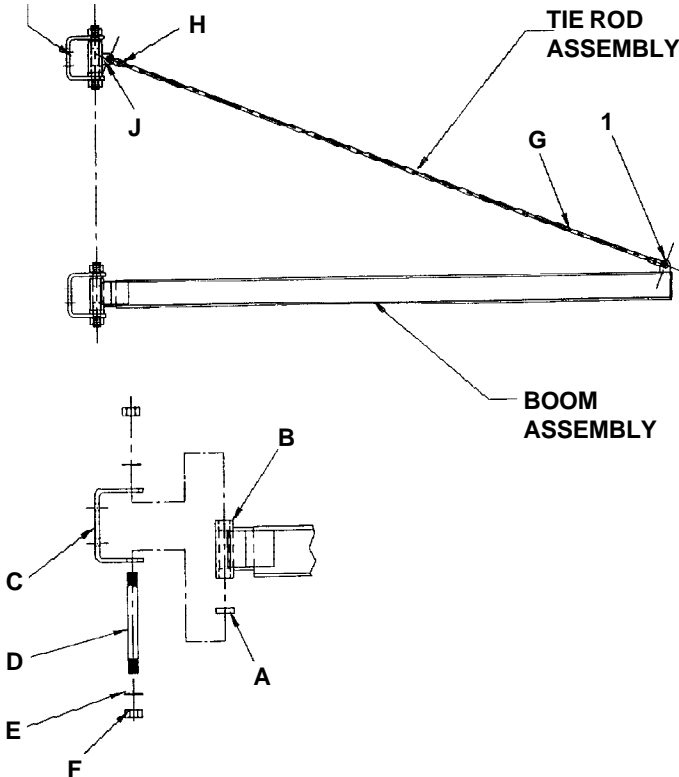
13/16" DRILL THROUGH
1ST FLANGE 12 PLACES

BOOM ASSEMBLY, UPPER SUPPORT ASSEMBLY & TIE ROD ASSEMBLY FOR LOW CEILING JIBS (SHIPPED IN 3 SECTIONS)

- 1) Drill holes at desired height on a steel column using the dimensions as shown. Make sure that the holes are centered on the column.
- 2) Bolt the mounting brackets to the column with suitable fasteners.

WARNING! This equipment is not designed for and should not be supporting or transporting personnel.

UPPER SUPPORT ASSEMBLY

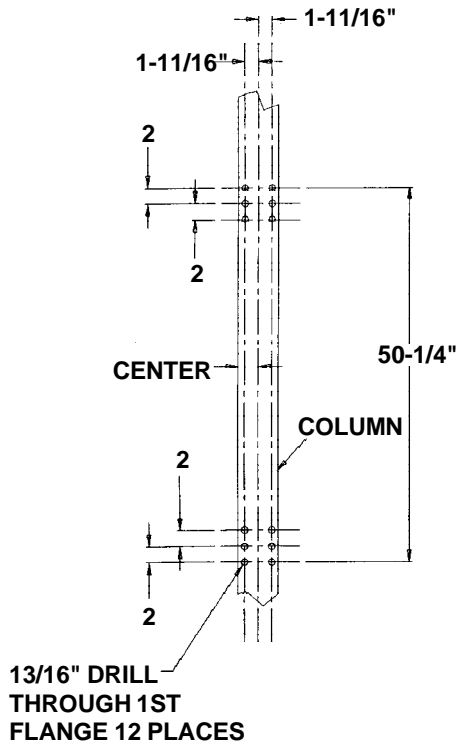


LOW CEILING JIB CRANE IS SHIPPED IN 2 SECTIONS, FRAME ASSEMBLY & PIVOT BRACKETS

- 1) After brackets are mounted, (28-126-050) place thrust bearing (A) under bearing boss (B).
- 2) Align bearing boss (B) with the holes inside the mounting bracket (C) on the column.
- 3) Place rod (D) through the holes of the mounting bracket and the bearing boss (B).
- 4) Place 1-1/8 flat washers (E) on both ends of the rod (D).
- 5) Tighten both ends of the rod with 1-1/8" nuts (F), be sure that there is even amount of threads on both ends of the rod (D). Allow a 1/4" gap between the bearing boss and the top of the bracket.
- 6) Repeat steps 1-5 for the bottom assembly.
- 7) Align the pin holes of one yoke (H) to the pivot yoke brace (J) and secure the clevis pin and cotter pin
- 8) Adjust yoke ends and tie rod (G) evenly to plump and level the beam.
- 9) Then secure the other yoke (I) to the I-Beam with a clevis pin and cotter pin

WALL JIB (FOR LOW CEILINGS)

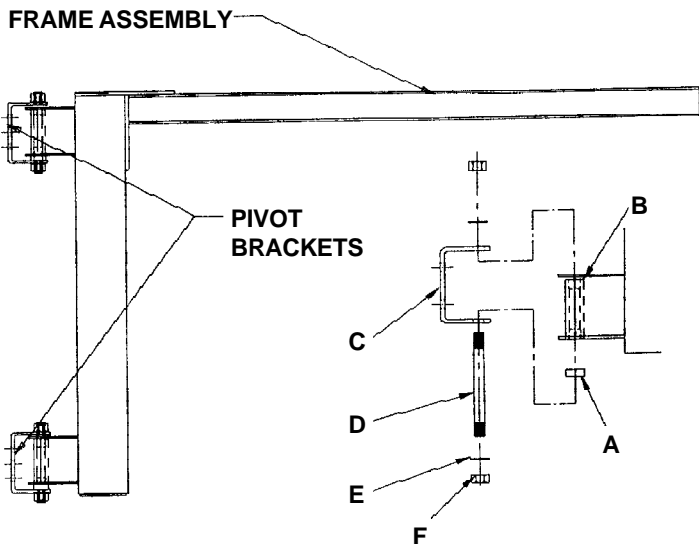
Model JIB-LC-3-92, JIB-LC-6-92, JIB-LC-10-92 & JIB-LC-20-92



LOW CEILING JIB CRANE IS SHIPPED IN 2 SECTIONS, FRAME ASSEMBLY & PIVOT BRACKETS

- 1) Drill holes at desired height on a steel column using the dimensions as shown. Make sure that the holes are centered on the column.
- 2) Bolt the mounting brackets to the column with suitable fasteners.

WARNING! This equipment is not designed for and should not be supporting or transporting personnel.

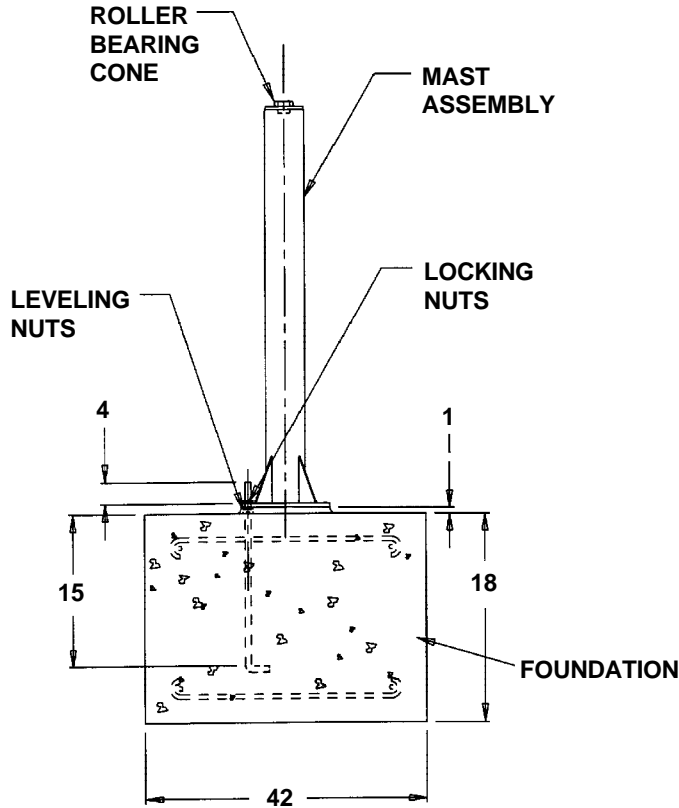


LOW CEILING JIB CRANE IS SHIPPED IN 2 SECTIONS, FRAME ASSEMBLY & PIVOT BRACKETS

- 1) After brackets are mounted, (28-126-012) place thrust bearing (A) under bearing boss (B).
- 2) Align bearing boss (B) with the holes inside the mounting bracket (C) on the column.
- 3) Place rod (D) through the holes of the mounting bracket and the bearing boss (B).
- 4) Place 1-1/8 flat washers (E) on both ends of the rod (D).
- 5) Tighten both ends of the rod with 1-1/8" nuts (F), be sure that there is even amount of threads on both ends of the rod (D). Allow a 1/4" gap between.
- 6) Repeat steps 1-5 for the bottom assembly.
- 7) Shim between pivot bracket and mounting beam to level jib boom.

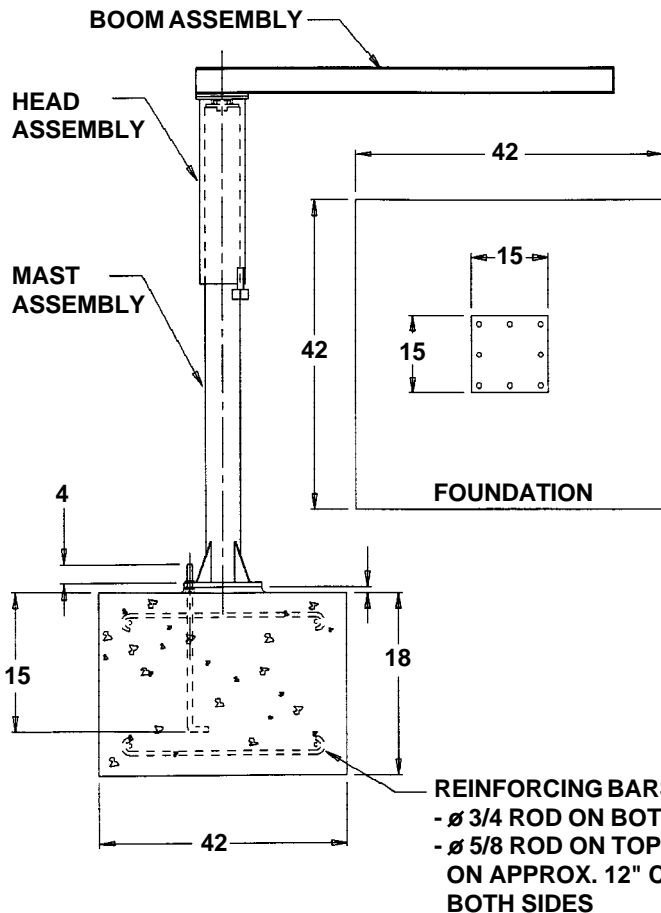
FLOOR MOUNTED JIBS

Model JIB-FM-3-80



JIB CRANE IS SHIPPED IN 3 SECTIONS, HEAD ASSEMBLY, BOOM ASSEMBLY, MAST ASSEMBLY, AND A BOX CONTAINING BOLTS AND INSTRUCTIONS

- 1) After foundation has hardened with anchor bolts set, install leveling nuts (jam nuts) on anchor bolts and level across nuts. Then fill center of bolt pattern to top of leveling nuts, with grout (Morta Mix).
- 2) Set mast into position on leveling nuts, install locking nuts on top of anchor bolts and base plate.
- 3) Plumb the mast at 90° increments. Using the leveling nuts to plumb.
- 4) Liberally grease the roller thrust bearing. The cone has been installed at the factory inside to head assembly.
- 5) Lower head assembly onto mast assembly. Use care not to damage roller thrust bearing.
- 6) Raise boom assembly onto head assembly. Attach with 4 - ASTM A325, 3/4 dia. bolts supplied.
- 7) After jib crane is operating satisfactorily set final grout under base plate and let harden before placing jib crane into service.



RECOMMENDED FOUNDATION CONCRETE FOUNDATION REQUIREMENTS ARE BASED ON A SOIL PRESSURE OF 2500 LBS. PER SQUARE FOOT 3000 LBS. PER SQUARE INCH COMPRESSIVE CONCRETE (5 BAG MIX TO ONE YARD OF CONCRETE)

SPECIFICATIONS

- 300 lbs. Capacity
- 750 lbs. Overall Weight

ANCHOR BOLTS

- 7/8" Diameter with J-Hook
- 5" Above Concrete Surface
- 15" Deep

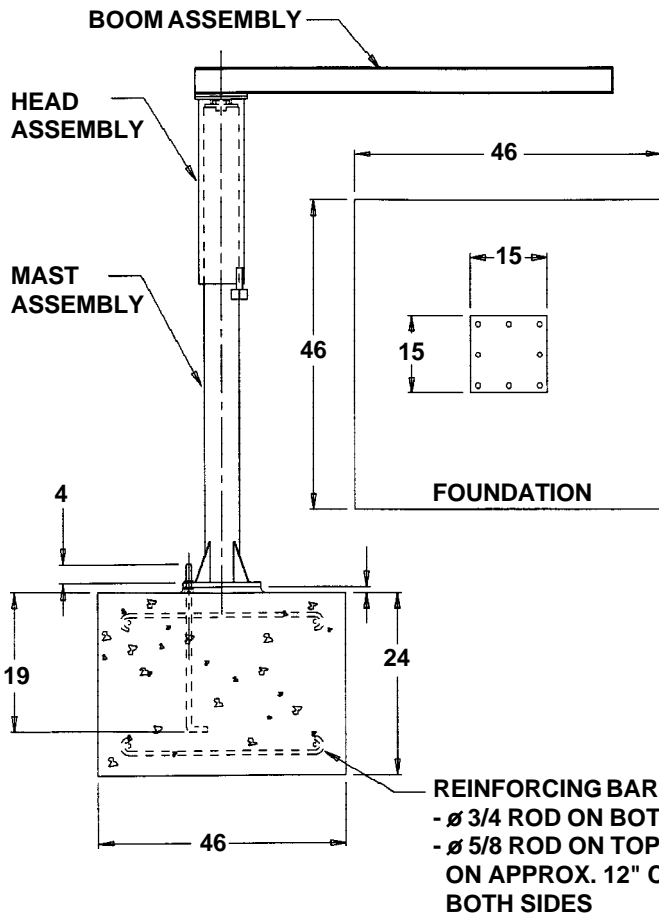
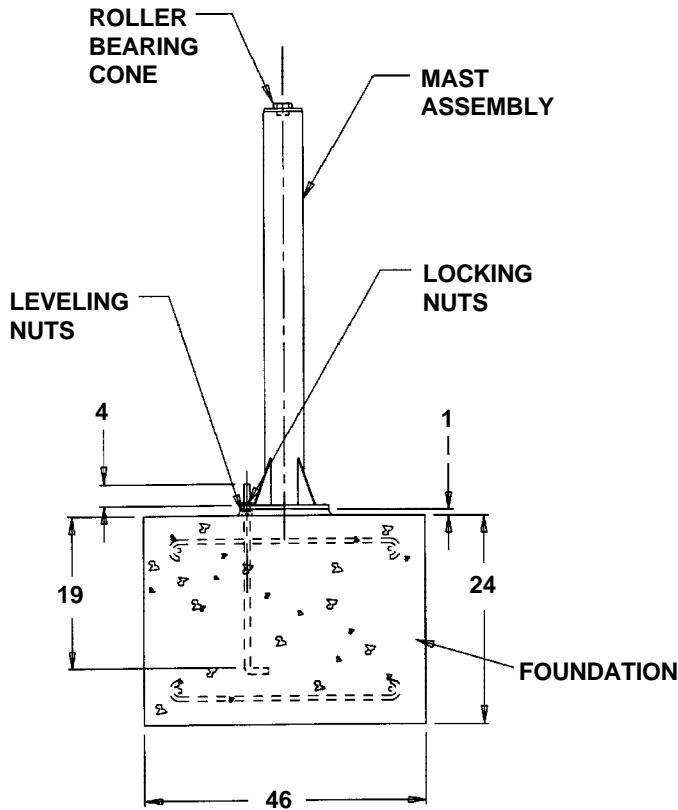
WARNING! This equipment is not designed for and should not be supporting or transporting personnel.

FLOOR MOUNTED JIBS

Model JIB-FM-6-80

JIB CRANE IS SHIPPED IN 3 SECTIONS, HEAD ASSEMBLY, BOOM ASSEMBLY, MAST ASSEMBLY, AND A BOX CONTAINING BOLTS AND INSTRUCTIONS

- 1) After foundation has hardened with anchor bolts set, install leveling nuts (jam nuts) on anchor bolts and level across nuts. Then fill center of bolt pattern to top of leveling nuts, with grout (Morta Mix).
- 2) Set mast into position on leveling nuts, install locking nuts on top of anchor bolts and base plate.
- 3) Plumb the mast at 90° increments. Using the leveling nuts to plumb.
- 4) Liberally grease the roller thrust bearing. The cone has been installed at the factory inside to head assembly.
- 5) Lower head assembly onto mast assembly. Use care not to damage roller thrust bearing.
- 6) Raise boom assembly onto head assembly. Attach with 4 - ASTM A325, 3/4 dia. bolts supplied.
- 7) After jib crane is operating satisfactorily set final grout under base plate and let harden before placing jib crane into service.



RECOMMENDED FOUNDATION CONCRETE FOUNDATION REQUIREMENTS ARE BASED ON A SOIL PRESSURE OF 2500 LBS. PER SQUARE FOOT 3000 LBS. PER SQUARE INCH COMPRESSIVE CONCRETE (5 BAG MIX TO ONE YARD OF CONCRETE)

SPECIFICATIONS

- 600 lbs. Capacity
- 750 lbs. Overall Weight

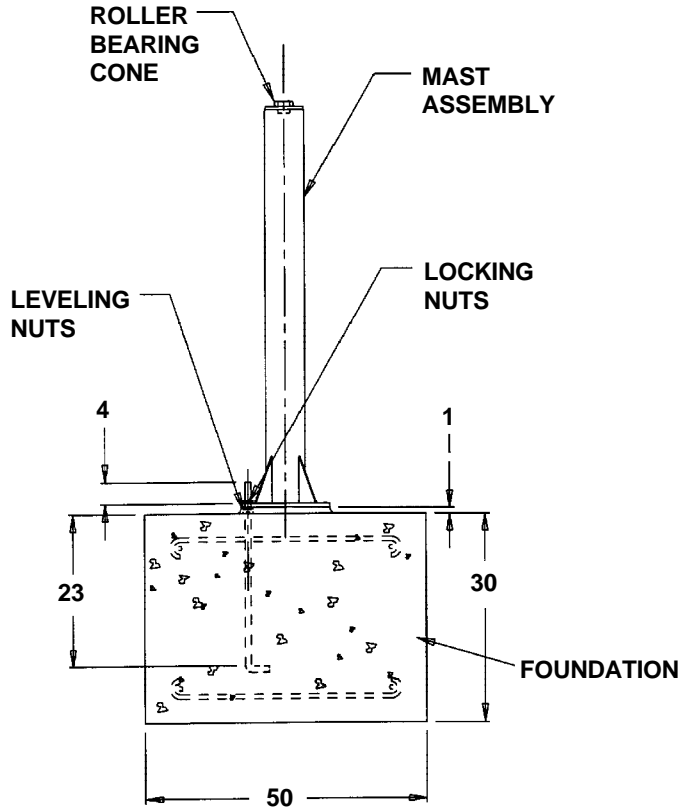
ANCHOR BOLTS

- 7/8" Diameter with J-Hook
- 5" Above Concrete Surface
- 19" Deep

WARNING! This equipment is not designed for and should not be supporting or transporting personnel.

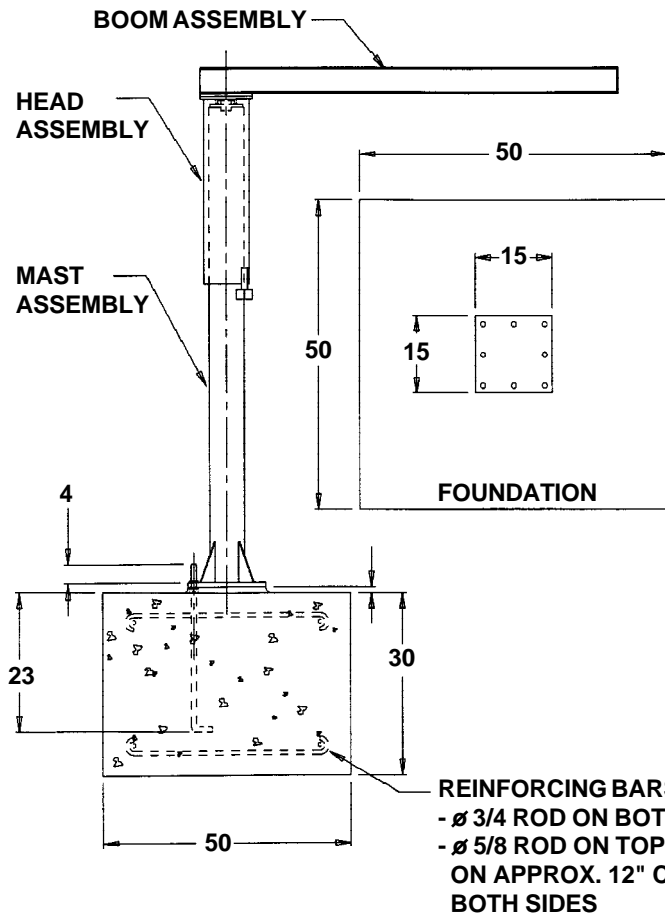
FLOOR MOUNTED JIBS

Model JIB-FM-10-80



JIB CRANE IS SHIPPED IN 3 SECTIONS, HEAD ASSEMBLY, BOOM ASSEMBLY, MAST ASSEMBLY, AND A BOX CONTAINING BOLTS AND INSTRUCTIONS

- 1) After foundation has hardened with anchor bolts set, install leveling nuts (jam nuts) on anchor bolts and level across nuts. Then fill center of bolt pattern to top of leveling nuts, with grout (Morta Mix).
- 2) Set mast into position on leveling nuts, install locking nuts on top of anchor bolts and base plate.
- 3) Plumb the mast at 90° increments. Using the leveling nuts to plumb.
- 4) Liberally grease the roller thrust bearing. The cone has been installed at the factory inside to head assembly.
- 5) Lower head assembly onto mast assembly. Use care not to damage roller thrust bearing.
- 6) Raise boom assembly onto head assembly. Attach with 4 - ASTM A325, 3/4 dia. bolts supplied.
- 7) After jib crane is operating satisfactorily set final grout under base plate and let harden before placing jib crane into service.



RECOMMENDED FOUNDATION CONCRETE FOUNDATION REQUIREMENTS ARE BASED ON A SOIL PRESSURE OF 2500 LBS. PER SQUARE FOOT 3000 LBS. PER SQUARE INCH COMPRESSIVE CONCRETE (5 BAG MIX TO ONE YARD OF CONCRETE)

SPECIFICATIONS

- 1,000 lbs. Capacity
- 750 lbs. Overall Weight

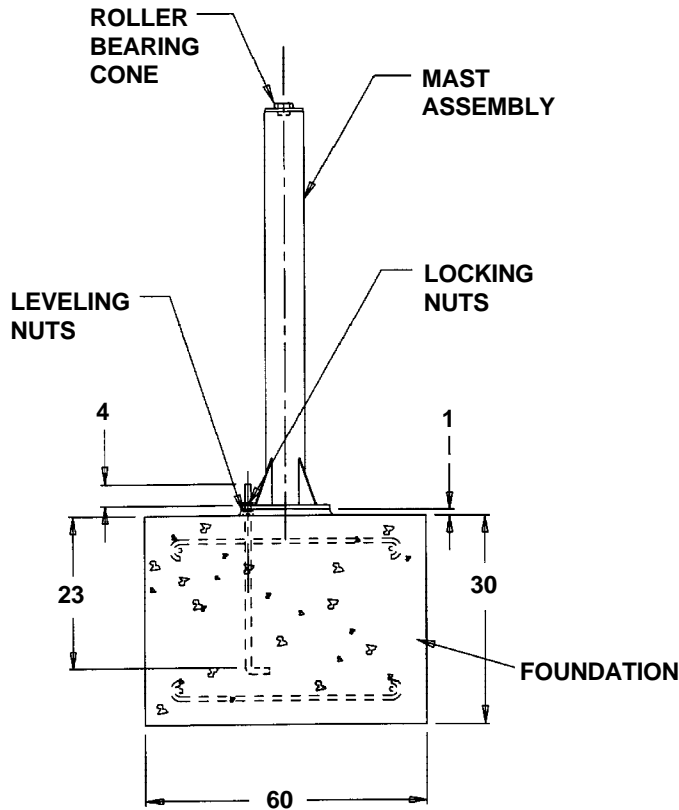
ANCHOR BOLTS

- 7/8" Diameter with J-Hook
- 5" Above Concrete Surface
- 23" Deep

WARNING! This equipment is not designed for and should not be supporting or transporting personnel.

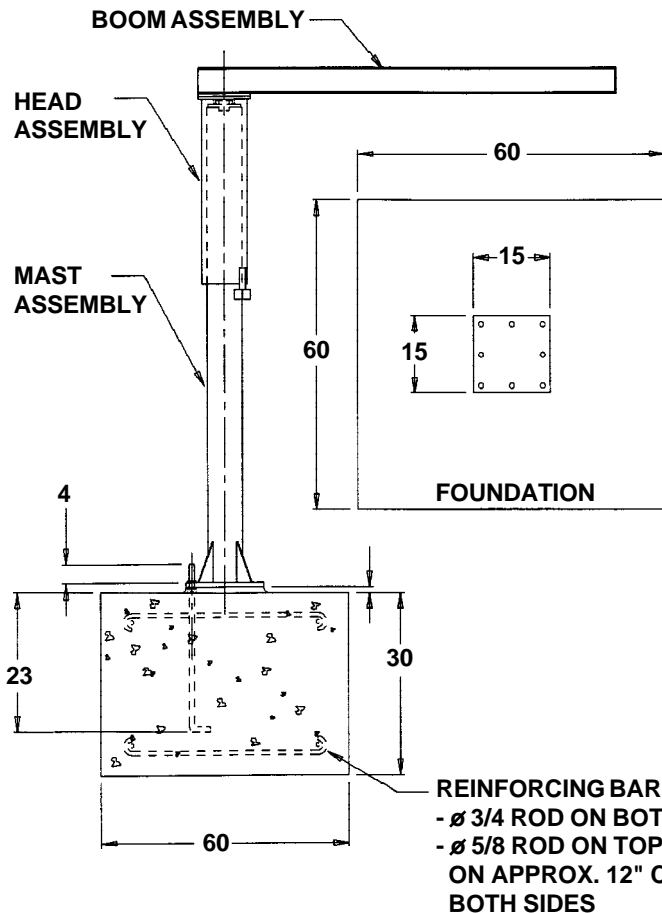
FLOOR MOUNTED JIBS

Model JIB-FM-20-80



JIB CRANE IS SHIPPED IN 3 SECTIONS, HEAD ASSEMBLY, BOOM ASSEMBLY, MAST ASSEMBLY, AND A BOX CONTAINING BOLTS AND INSTRUCTIONS

- 1) After foundation has hardened with anchor bolts set, install leveling nuts (jam nuts) on anchor bolts and level across nuts. Then fill center of bolt pattern to top of leveling nuts, with grout (Morta Mix).
- 2) Set mast into position on leveling nuts, install locking nuts on top of anchor bolts and base plate.
- 3) Plumb the mast at 90° increments. Using the leveling nuts to plumb.
- 4) Liberally grease the roller thrust bearing. The cone has been installed at the factory inside to head assembly.
- 5) Lower head assembly onto mast assembly. Use care not to damage roller thrust bearing.
- 6) Raise boom assembly onto head assembly. Attach with 4 - ASTM A325, 3/4 dia. bolts supplied.
- 7) After jib crane is operating satisfactorily set final grout under base plate and let harden before placing jib crane into service.



RECOMMENDED FOUNDATION CONCRETE
 FOUNDATION REQUIREMENTS ARE BASED ON A
 SOIL PRESSURE OF 2500 LBS. PER SQUARE FOOT
 3000 LBS. PER SQUARE INCH COMPRESSIVE
 CONCRETE (5 BAG MIX TO ONE YARD OF CONCRETE)

SPECIFICATIONS

- 2,000 lbs. Capacity
- 750 lbs. Overall Weight

ANCHOR BOLTS

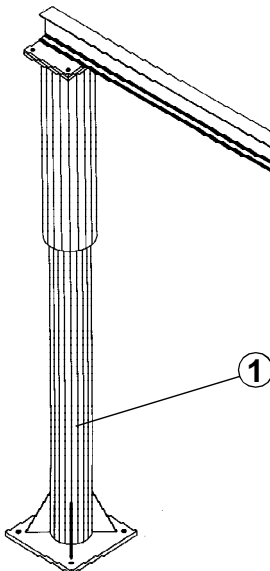
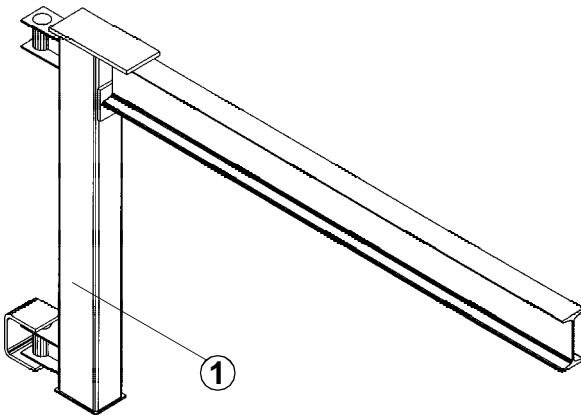
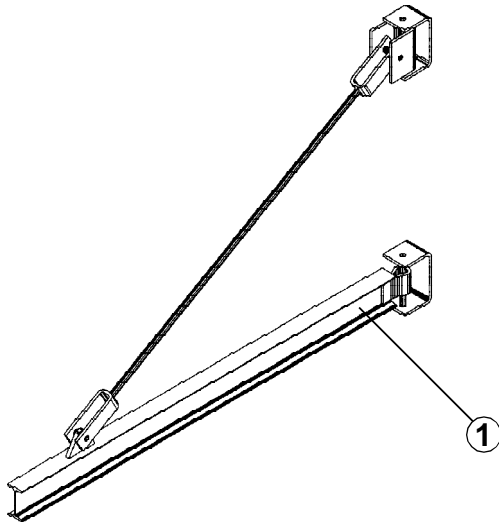
- 7/8" Diameter with J-Hook
- 5" Above Concrete Surface
- 26" Deep

WARNING! This equipment is not designed for and should not be supporting or transporting personnel.

WARNING LABEL IDENTIFICATION

MAKE SURE ALL WARNING LABELS ARE IN PLACE!

*Product safety signs or labels should be periodically inspected and cleaned by the product users as necessary to maintain good legibility for safe viewing distance...ANSI 535.4 (10.21)
Contact manufacturer for replacement labels.



①

⚠ DANGER

- Inspect unit before use.
- If damage is observed that could affect safe operation of unit, it must be repaired before use.
- Never stand under load!
- Never exceed rated capacity.
- Use only on level concrete or equal.

⚠ PELIGRO

- Inspeccione la unidad antes del uso.
- Si hay algún daño que pueda afectar la operación segura de la unidad, se debe reparar antes del uso.
- Nunca se sitúe debajo de la unidad.
- Use solo en cemento a nivel o equivalente.

⚠ DANGER

- Inspecter l'unité avant l'utilisation.
- Si un dommage pouvant affecter l'opération en toute sécurité de l'unité est observé celle-ci doit être réparée avant l'utilisation.
- Ne jamais se tenir sous le chargement!
- Ne jamais excéder la capacité autorisée.
- N'utiliser que sur un ciment à niveau ou sur une surface équivalente.

Vestil Manufacturing Co.

Angola, IN 46703

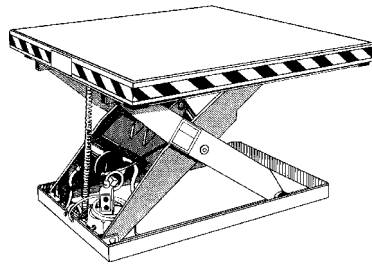
Ph. (260) 665-7586

Fax (260) 665-1339

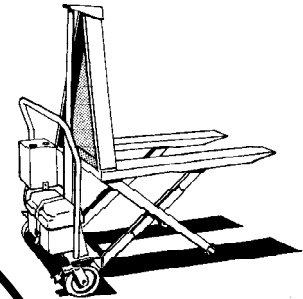
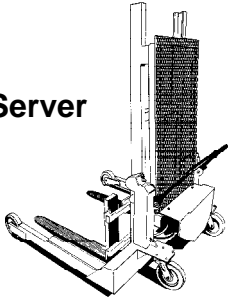
312

Material Handling Problem Solvers

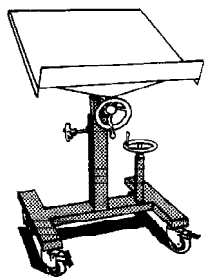
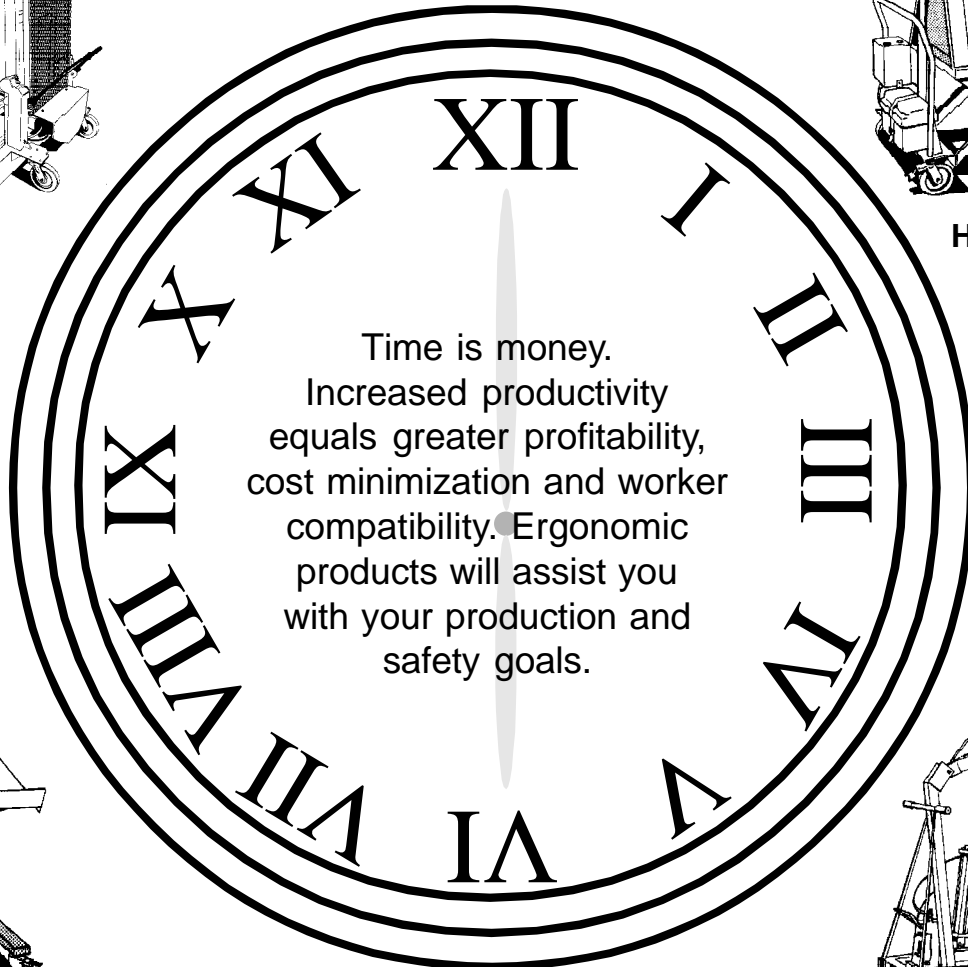
Scissor Lift Table



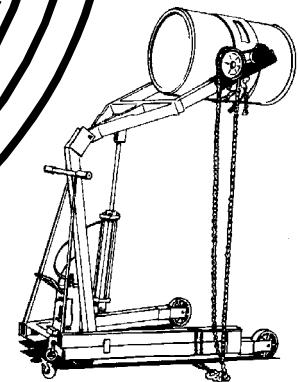
Pallet Server



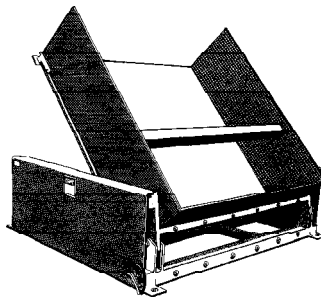
High Rise Lift



Mobile Lift & Tilt
Work Stand



Drum Carrier/Rotator



Ground Lift Tilter