

VESTIL MANUFACTURING CORP.
 2999 N. Wayne St., Angola, IN 46703
 Ph: 260-665-7586 · Fax: 260-665-1339
 E-mail: sales@vestil.com · Website: www.vestil.com

OWNER'S MANUAL

MODEL EHLTG-WCL SCISSOR LIFT TABLE

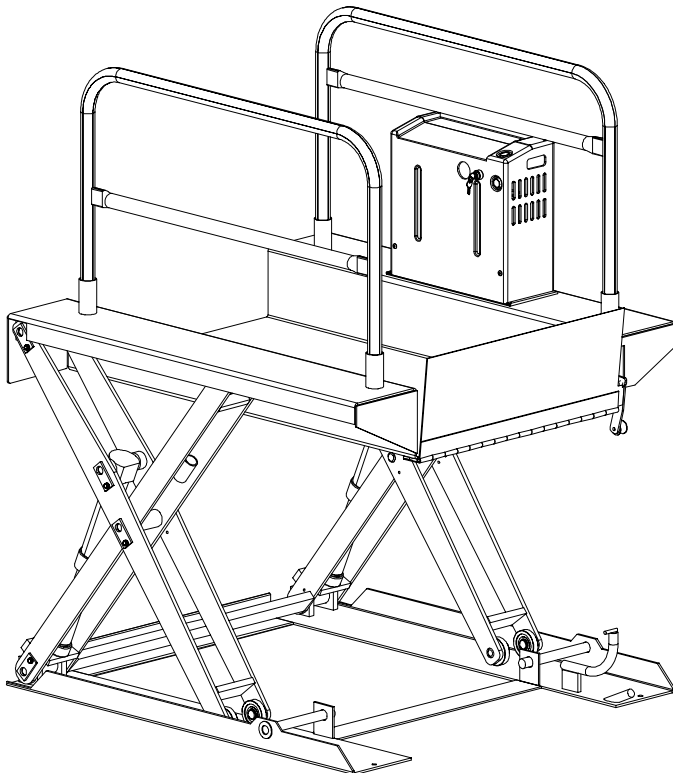
Serial number _____

Installation Instructions	2	Electrical & Hydraulic Diagrams & BOM	7-8
Operation Instructions	3	Power Unit's Operation	9
Routine Maintenance & Safety Checks	4	Troubleshooting	10
Exploded Structural Parts Drawing & BOM	5	Safety Label Identification	11
Ramp/latch assembly Detail Drawing	6	Warranty	12

IMPORTANT NOTES, WARNINGS, AND SAFETY INSTRUCTIONS

Ensure that all employees understand and follow the following.

- Read and understand the owner's manual before using or servicing the lift.
- The load must be removed and either the leg set lowered onto the maintenance props or the platform fully lowered to the floor before any work is performed on the hydraulic system.
- Ensure that all safety and warning labels stay in place and are legible.
- Do not use the lift if any damage or unusual noise is observed.
- Always watch the load and around the lift's sides carefully when the lift is in operation.
- Do not perform any modifications to the lift without the manufacturer's approval. Failure to receive authorization for changes to the equipment could void the warranty.
- Maintenance and repairs are to be done only by personnel qualified to perform the required work.
- Do not use brake fluid or jack oils in the hydraulic system. If oil is needed, use a synthetic anti-wear hydraulic oil or a synthetic transmission fluid having a viscosity grade of 150 SUS at 100°F, (ISO 32 cSt @ 40°C). (Ex: Dexron synthetic transmission fluid.)



WHEN ORDERING

REPLACEMENT PARTS:

We take pride in using quality parts on the equipment we manufacture. We are not responsible for equipment problems resulting from the use of unapproved replacement parts.

To order replacement or spare parts for this equipment, contact the factory.

In any communication with the factory please be prepared to provide the machine's serial number, which is indicated on the machine dataplate.

RECEIVING INSTRUCTIONS

Every unit is thoroughly tested and inspected prior to shipment. However, it is possible that the unit could incur damage during transit.

Inspect the unit closely when it arrives. *If you see evidence of damage or rough handling to either the packaging or to the product when it is being unloaded, **immediately** make a note of it on the Bill Of Lading!*

It is important that you remove the product's packaging upon its arrival to ensure that there is no concealed damage or to enable a timely claim with the carrier for freight damage.

Also verify that the product and its specifications are as ordered.

INSTALLATION INSTRUCTIONS – EHLTG-WCL

Review this entire page before installing the ground-clearance wheelchair lift.

Consult the factory in the event there are any questions or problems at the time of installation, or for information regarding optional features not covered by the owner's manual.

The lift must be removed from the shipping wood and securely anchored to a concrete surface before use!

- Modifications or additions made without prior manufacturer's authorization may void the lift's warranty. The addition of ancillary equipment to the lift may necessitate that its load capacity be reduced.
- The installation must be made so that it complies with all the regulations applicable to the machine and its location. The end-user must verify that the supplied equipment is installed so it will be suited to the environment in which it will be used.
- Installation must be performed by suitably trained personnel with access to the appropriate equipment. The electrical aspects of the installation should be performed by an electrician.

For a typical installation you will need the following:

1. A fork truck or hoisting means to unload the lift from the freight truck and set it into place.
2. A smooth, level, and adequately strong concrete surface on which to mount the lift.
3. Concrete anchors, a masonry drill, a masonry bit, hand tools, grout, and steel shims. Consult an architect or professional engineer to determine the best size and type of hardware with which to anchor the machine to the floor.
4. A 115V power supply circuit for the battery charger. Refer to the electrical section in this manual for more information. The end-user is responsible for supplying the branch circuit's required overcurrent and short-circuit protection.

-
1. The lift must be lowered and fully supported when moved. Move the lift into place with straps or forks placed underneath both the frame and the platform. Use care to avoid damage to the power unit mounted on the side of the lift.
 2. Anchor the frame to the concrete surface through the 9/16" holes located at the corners of the frame.
 3. Shim and/or grout under the full length of the frame sides.
 4. Operate the lift through several full up and down cycles. Verify that the upper travel limit switch (mounted in one side of the leg set) and the under-platform guard switches (if applicable) function properly.
 5. Check the remote power unit's hydraulic oil level. It should be filled to within 1" to 1½" of the reservoir's fill hole. If oil is needed, use a synthetic anti-wear hydraulic oil or synthetic transmission fluid with a viscosity grade of 150 SUS at 100°F (ISO 32 at 40°C), such as Dexron II or Dexron III.
 6. Clean up any debris or spilled oil, and verify that all of the warning and safety labels are intact.

OPERATION INSTRUCTIONS – EHLTG-WCL

- *Consult ANSI MH29.1, Section 12 for the owner's / user's responsibilities regarding the operation, care, and maintenance of this machine.*
- *Ensure that all persons involved in the operation of this lift understand and follow these instructions!*

The standard model EHLTG-WCL is suitable for use outdoors in most residential locations and many commercial locations. It is intended to be used to elevate persons and gear with a combined weight of not over 750 pounds from ground level to a porch or deck surface.

Loading:

The load rating, in pounds, is shown on the machine dataplate located on the hinged end of the platform. It indicates the net capacity of the scissor lift with a static load that is centered and evenly distributed on the platform.

Do not exceed a rate of two feet per second when moving loads across the platform.

Note: The addition of any ancillary equipment to the machine by third parties must be taken into account when determining the maximum working load to be placed on the platform.

Warning: Do not exceed the lift's load rating. Injury to personnel and/or permanent damage to the lift could result from exceeding the listed capacity.

Operation:

Warning: Keep all personnel clear of the machine when it is in operation. Be certain no part of any person or object is under any part of the platform before lowering the unit.

Caution: Always watch for obstructions under the lift's sides carefully when the lift is in operation.

The zero-clearance scissor lift is furnished with pushbutton controls mounted on the power unit. The controls can be disabled with the OFF/ON key switch, also on the power unit.

Pressing the "UP" pushbutton will turn on the power unit to raise the platform. The platform will raise only while the pushbutton is pressed. Upon releasing the pushbutton, the platform will stop and hold its position.

Pressing the "DOWN" pushbutton will energize the lowering valve to allow the platform to descend by gravity (the motor does not run). Again, releasing the pushbutton will stop the platform movement, and the unit will hold its position.

Caution: Do not use the lift if any damage or unusual noise is observed, if it is in need of repairs, or if it seems to be malfunctioning. Address any perceived problems in a timely manner.

Note: Only qualified individuals trained to understand mechanical devices and their associated electrical and hydraulic circuits should attempt troubleshooting and repair of this equipment.

Ensure that all safety and warning labels stay in place and are legible. Refer to the labels page in this manual.

Installing the maintenance props:

Warning: All load *must* be removed from the platform before installation of the maintenance props.

Raise the platform to its full raised height.

Remove both of the maintenance pins (1¹/₈" Ø x approximately 10³/₄" long) from their stored positions, located near each leg assembly's center axle.

Locate the pairs of maintenance pin brackets near the open end (of each side) of the frame and slide a pin through each of them from the outside. Be certain that the pin is fully inserted through the inner bracket.

Lower the platform until the frame rollers engage the maintenance pins.

When work is finished, raise the lift and replace the maintenance props to their storage position.

ROUTINE MAINTENANCE & SAFETY CHECKS – EHLTG-WCL

- *Warning: Care should be taken to identify all potential hazards and comply with applicable safety procedures before beginning work.*
- *Warning: Raise the platform and install the maintenance props before beginning any inspections or work on the unit. See the "Operation Instructions" page.*
- *Only qualified individuals trained to understand mechanical devices and their associated electrical and hydraulic circuits should attempt troubleshooting and repair of this equipment.*

(A) Inspect daily for the following:

- 1.) Adequate battery voltage (indicated on the BCI gauge)
- 2.) Frayed wires
- 3.) Oil leaks
- 4.) Pinched or chafed hoses
- 5.) Damage or structural deformation to the structural members, the cylinder brackets, etc.
- 6.) Unusual noise or binding, or evidence thereof.
- 7.) Proper functioning of the upper travel limit switch, and of any pinch point guard switches (if applicable).

(B) Inspect monthly for:

- 1.) The oil level. Oil should be 1" to 1½" below the reservoir's fill hole with the lift in the fully raised position. See below for oil specification.
- 2.) Worn or damaged hydraulic hoses and electrical wires.
- 3.) Pivot point wear.
- 4.) Rollers' looseness and wear.
- 5.) Integrity of the retaining rings on all rollers and on all pivot point pins.
- 6.) The integrity of the frame anchor bolts, and for cracks in the concrete around them.
- 7.) Proper functioning of any hand- or foot-operated mechanisms.
- 8.) Unusual noises or movement during operation.
- 9.) All the information, safety, and warning labels being in place and in good condition.
- 10.) The need to clean dirt and/or debris from around or underneath the lift.

(C) Yearly inspection

- 1.) All switches, wires, and their connections inside the power unit and on the lift should be inspected for corrosion or weather-related damage.
- 2.) The entire structure should be inspected and evaluated for the need to clean and paint any rusted surfaces.
- 3.) The oil should be changed if the oil darkens, becomes gritty, or turns a milky color (indicating the presence of water). Replace with a synthetic anti-wear hydraulic oil or a synthetic transmission fluid with a viscosity grade of 150 SUS at 100°F, (ISO 32 at 40°C). Ex: synthetic Dexron II or Dexron III transmission fluid.

EXPLODED PARTS VIEW & BOM -- EHLTG-WCL

DWG NO.: 04-006-048	LOCATION: K:ARCHIVE01-10	MODEL: 04-001-048	WEIGHT: 0.00
----------------------------	---------------------------------	--------------------------	---------------------

ITEM NO.	PART NUMBER	DESCRIPTION	QTY.
1	04-514-079	WELDMENT, BASE, EHLTG-WCL	1
2	04-513-039	ASSEMBLY, DECK, EHLTG-WCL	1
3	04-510-022	INNER LEG ASSEMBLY, EHLTG-WCL	1
4	04-510-024	LEG ASS'Y, OUTER, EHLTG-WCL	2
5	04-612-008	INNER LEG RETAINER, (7"), EHLTG-WCL	6
6	04-612-009	INNER LEG RETAINER, (5 3/4"), EHLTG-WCL	2
7	32415	SCREW, SELF TAPPING, 5/16 - 18 UNC x 1/2 LG.	8
8	99-021-903	HYDRAULIC CYLINDER, Ø2" x 10" STK	2
9	04-037-006	RAMP LATCH, EHLTG-WCL	1
10	04-525-001	WELDMENT, HANDRAIL, GUIDE SIDE	1
11	04-525-002	WELDMENT, HANDRAIL, SHORT SIDE	1
12	99-158-001	FINAL ASS'Y, MID-POWER UNIT-0C	1
13	04-612-005	PIN LOCKING ASS'Y. (MAINT. PROP, EHLTG 1-4K)	2
14	04-112-013	LATCH PIN, EHLTG-WCL	1
15	68009	Ø3/8 RETAINING RING	1
16	5300-34	3/4" O-RING	1
17	121201JY	SPRING, .091 WIRE, HDC/WCL	1
18	33008	Ø3/8 USS FLAT WASHER Z PLATED	2

UNLESS OTHERWISE SPECIFIED:
 REFER ALL DIMS AND SHARP EDGES
 DIMENSIONS ARE IN INCHES
 DECIMALS ±.005
 FRACTIONS ±.005
 ANGLES ±.005
 TOLERANCES: MACHINE WELDMENT

COMMENTS:
 © INT SCALE DRAWING

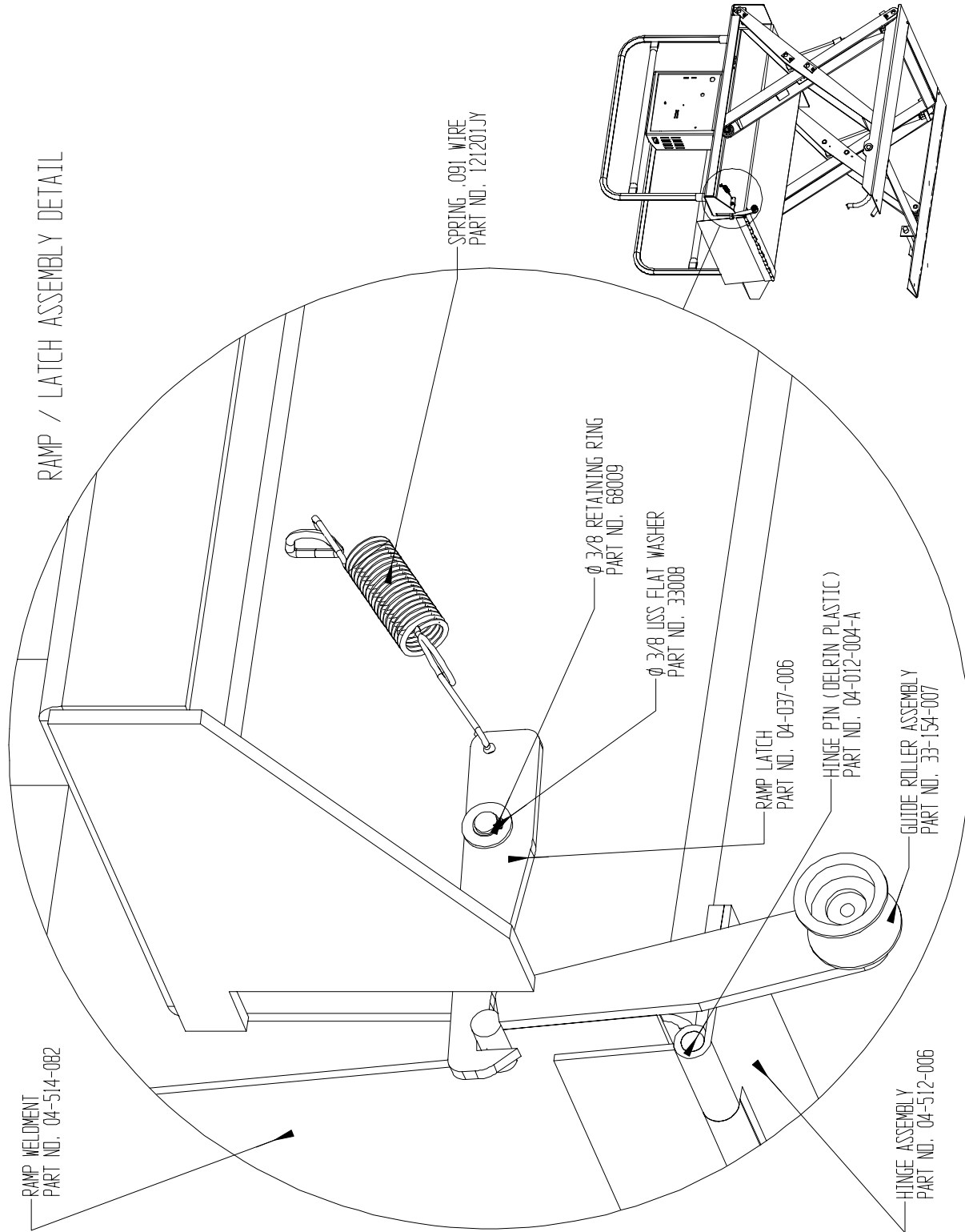
DESCRIPTION:
 Vestil Manufacturing Co.
 ASS'Y, 30, EXPLODED, EHLTG-WCL

DRAWN BY: K. YOUNG **DATE:** 11/2/05 **SCALE:** 1:24 **SIZE:** A
CHECKED BY: **DATE:** **SHEET:** 1 OF 1 **REV:**

MATERIAL: **DWG. NO.:** 04-006-048

AUTO-RAMP PARTS DETAIL -- EHLTG-WCL

o

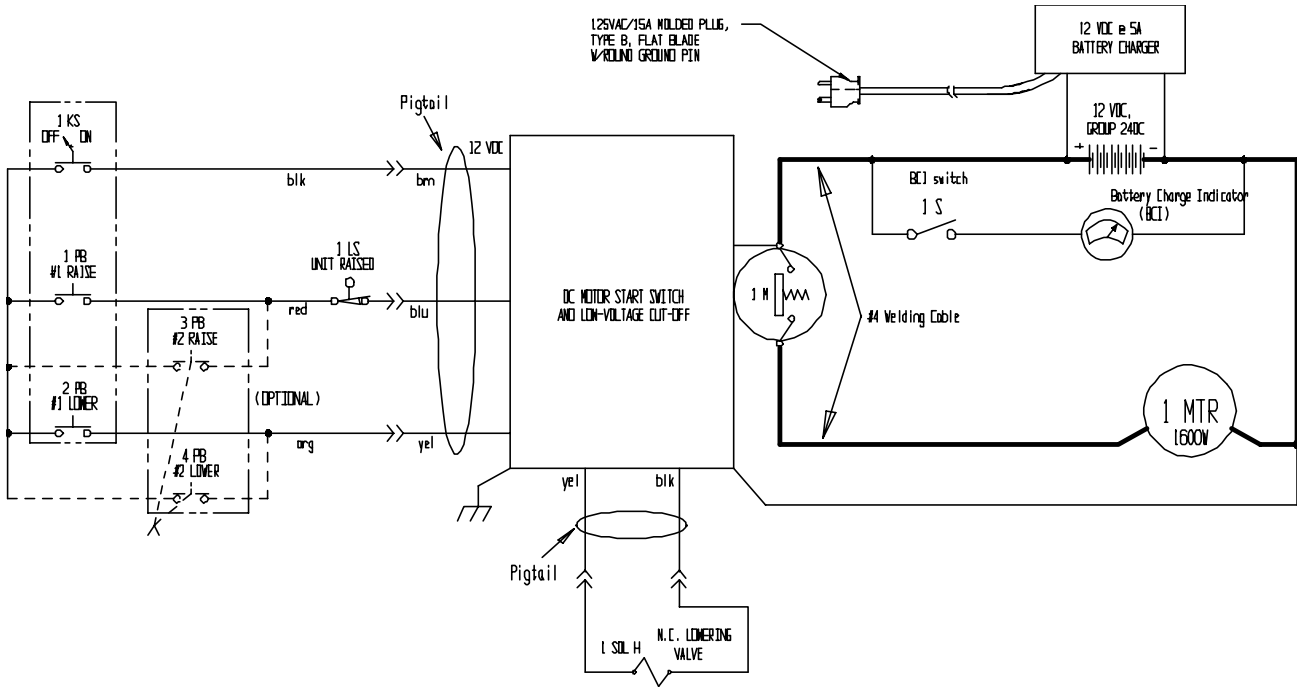


* NOTE: RAMP WELDMENT IS WELDED TO HINGE ASSEMBLY, WHICH IS WELDED TO DECK

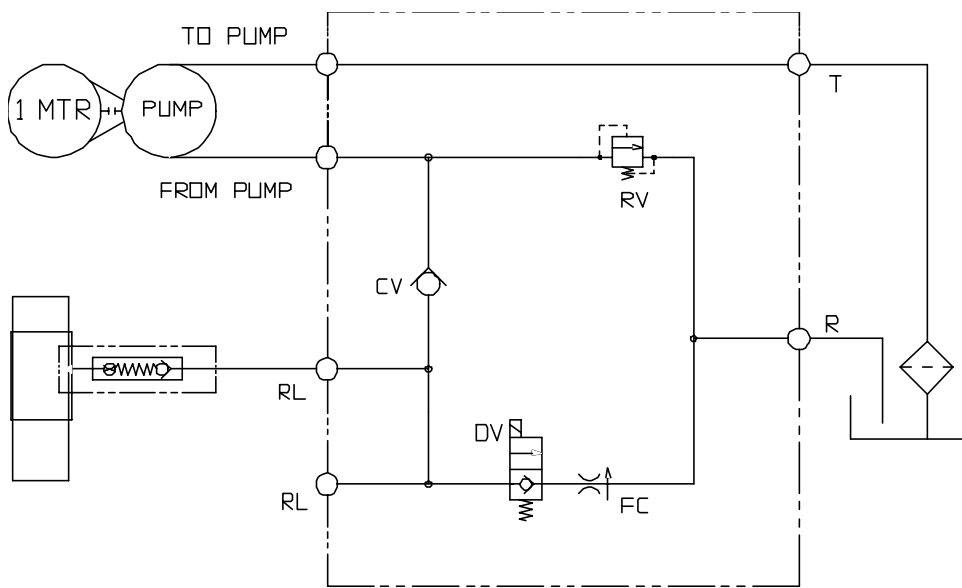
Warning: Care should be taken to identify all potential hazards and comply with applicable safety procedures before beginning work. Ensure that all system pressure and power have been removed, before attempting to work on the electrical or hydraulic systems.

- *Either fully lower, or raise the lift and install the maintenance props, before beginning any inspections or work.*
- *Only qualified individuals trained to understand mechanical devices and their associated electrical and hydraulic circuits should attempt troubleshooting and repair of this equipment*
- *Do not use brake fluid or jack oils in the hydraulic system. If oil is needed, use a synthetic anti-wear hydraulic oil or a synthetic transmission fluid having a viscosity grade of 150 SUS at 100°F (ISO 32 cSt @ 40°C), such as Dexron II or Dexron III transmission fluid.*

ELECTRICAL DIAGRAM -- EHLTG-WCL



HYDRAULIC DIAGRAM – EHLTG-WCL



GEAR PUMP HYDRAULIC LOGIC DIAGRAM

DC POWER UNIT LAYOUT & BOM-- EHLTG-WCL

REV.	DATE	BY	REVISIONS	INITIAL
073003JY-1A				

ITEM	REQ	PART NO.	DESCRIPTION
1	1	4JY1119	BASE
2	1	1212SR	BATTERY CHARGER
3	1	01-033-024	18/3 W/4 PIN PLUG
4	4	37927	TINNERMAN CLIP
5	1	99-023-001	RESERVOIR
6	1	99-034-013	BATTERY STRAP
7	1	24DC36	BATTERY
8	1	BV-48	BREATHER
9	1	15-533-013	CABLE, BATTERY 23" BLACK
10	1	15-533-014	CABLE, BATTERY 23" RED
11	2	23305	SHCS UTILITY GRADE
	2	33888	HIGH COLLAR LOCK WASHER
	2	33008	USS FLAT WASHER Z PLATED
12	1	99-135-011	MOTOR, 12VDC
13	1	15-022-004	RELAY, START SOLENOID
14	1	HS64	CLAMP, WORM GEAR
15	1	BG-12V	GAUGE, BATTERY INDICATOR
16	3	ZB2BZ009	BASE, CONTACT BLOCK
17	3	ZB2BE101	CONTACT BLOCK N.O.
18	2	ZB2BA2C	OPERTOR, BLACK, NON-ILLUM.
19	1		KEY SWITCH, 2 POSITION
20	1	01-134-007	LEGEND, ON - OFF
21	1	091802JY	FIBERGLASS COVER
22	1	HS52	CLAMP, WORM GEAR
23	1	01-143-906	PUMP
24	1	01-627-010	MANIFOLD ASSM (SEE PAGE 2)
25	2	29201	TPHMS, Z PLATED
26	2	29185	TPHMS, Z PLATED
27	4	23255	SHCS UTILITY GRADE
	4	33687	HIGH COLLAR LOCK WASHER
28	1	152400-03	MOLDED CORD
29	1	150CCTM.OEM	CONNECTOR, CHARGE
30	10"	3MT ST3540	1"HOOK&LOOPPRESS SENSITIVE

REMOVE ALL BURS AND SHARP EDGES			T & S EQUIPMENT COMPANY	
CONCENTRIC	.006 TIR	.060 TIR	SCALE: NIS	APPROVED BY:
ANGLES	+/- 0° 30'	+/- 1° 0'	DATE: 07/30/03	DRAWN BY: J.YOUNG
DECIMALS	x.xxx +/- .005		DC MODULAR POWER UNIT	
FRACTIONS	x.xx +/- .010 x.x +/- .025	+/- .015		
TOLERANCE	MACHINE	WELDMENT	DRAWING NUMBER: 073003JY-1A	

THIS PRINT IS CONFIDENTIAL AND IS THE PROPERTY OF T & S EQUIPMENT CO. THIS PRINT SHALL NOT BE REPRODUCED, COPIED OR REPRODUCED IN WHOLE OR IN PART NOR SHALL THE CONTENTS BE REVEALED ANY MANNER TO ANYONE UNLESS WRITTEN PERMISSION IS OBTAINED FROM T & S EQUIPMENT CO.

THE POWER UNIT'S OPERATION -- EHLTG-WCL

The electric/hydraulic zero-clearance scissor lift table utilizes an electric motor directly coupled to a gear-type hydraulic pump to produce the needed fluid pressure and flow to allow the cylinders to perform the work of raising a load.

A hydraulic manifold houses the hydraulic control components, and is bolted directly onto the gear pump.

The power unit's hydraulic components are all rated for 3,000 psi working pressure.

- Important parts of the power unit include:
 - The electric motor. 12 VDC, series-wound, 1,600 watt.
 - The gear pump. Its shaft is coupled directly to the shaft of the electric motor.
 - The check valve. Its purpose is to prevent the backflow of fluid through the pump. In this way it allows the platform to be held at a given elevation indefinitely.
 - The pressure relief valve. Its job is to open a path for fluid to flow back to the reservoir in the event that the fluid pressure built up by the pump exceeds 3,000 psi. Thus the system cannot see more than 3,000 psi.
 - The lowering solenoid valve. This is an electrically-operated cartridge valve. It contains a screen to keep contaminants from entering the valve.
 - The pressure-compensated flow control spool. This regulates the fluid flow back to the reservoir when the valve opens. It allows the platform to always lower at the same rate regardless of whether there is a load in the platform or not.
 - The hydraulic lifting cylinders. These are displacement-style cylinders. They have a bleeder valve located at their top end to allow air to be bled from the hydraulic system.
 - The safety velocity fuse. This is a device that is installed in the cylinder's hose port. It closes quickly in the event of a catastrophic hose failure to prevent the platform from collapsing down. The platform remains stationary until pressure is reapplied to the system.
 - The hydraulic fluid. The system uses HO150 hydraulic fluid. Any synthetic anti-wear hydraulic fluid or synthetic transmission fluid having a viscosity grade of 150 SUS at 100°F (ISO 32 @ 40°C), such as synthetic Dexron II or Dexron III transmission fluid, is acceptable.
 - When the platform is to be lifted, press the "UP" pushbutton. The motor turns, and in turning it spins the hydraulic gear pump. Oil is drawn from the reservoir through the suction filter and into the pump.
 - ◆ The pump pushes the pressurized oil through the check valve and out to the lift cylinders. Releasing the "RAISE" pushbutton at any point will stop the lift, and the platform will hold at that height. An upper travel limit switch turns off the motor when the platform is at its full lift height.
 - When the platform is to be lowered, press the "DOWN" pushbutton.
 - ◆ The lowering valve opens, bypassing the check valve and allowing the oil in the cylinders to return back to the reservoir through the return hose. The rate at which the platform lowers is regulated by the internal pressure-compensated flow spool. Releasing the pushbutton at any point will stop the platform's descent, and the platform will hold at that height.
 - In the event that the platform creeps down slowly after releasing a "DOWN" control, it will be necessary to remove the lowering cartridge valve for inspection and cleaning, as follows:
 - ◆ Lower the platform until it is fully lowered.
 - ◆ Remove any load from the platform.
 - ◆ Remove the nut holding the solenoid coil onto the valve stem, then remove the coil, and then unscrew the valve from the manifold.
 - ◆ Inspect the valve for contaminants, and the valve's o-rings and back-up washers for cuts, tears, or other damage.
 - ◆ With the valve immersed in mineral spirits or kerosene, use a thin tool such as a small screwdriver or a small hex wrench to push the poppet in and out several times from the bottom end of the valve. The valve should move freely, about 1/16" from closed to open position. If it sticks in, the valve stem could be bent and will need to be replaced if it doesn't free up after cleaning. Blow the valve off with a compressed-air gun while again pushing the poppet in and out.
 - ◆ Inspect the bottom of the manifold's valve cavity for contaminants.
 - ◆ Again with the thin tool, press on the middle of the flow control spool located in the bottom of the cavity. It should move down and back up freely.
 - ◆ Reinstall the valve into the manifold, tightening the valve with approximately 20 lb-ft of torque.
 - If the platform lowers extremely slowly, or not at all, a cylinder's velocity fuse could be closing. This can be caused by air in the hydraulic cylinder. **To bleed the air from the system:**
 - ◆ Remove any load from the platform.
 - ◆ Raise the platform and install the maintenance props (see the "Operation Instructions" page).
 - ◆ Lower the platform until the rollers rest on the maintenance props.
 - ◆ Hold a rag over each cylinder's bleeder valve (it looks like a grease zirk) and open the valve about ½ turn with a 1/4" or 5/16" wrench. Oil and air will sputter from the valve - once no air is observed, close the valve.
 - ◆ Raise the lift, remove the maintenance props, and return them to their stored position.

TROUBLESHOOTING GUIDE -- EHLTG-WCL

Before performing any task, always lower the platform fully to the floor or lower the legs onto the maintenance props (see the "Operation Instructions" page) and disconnect the power supply.

Consult the factory for problems at time of installation, or for any problems not addressed below.

<u>Problem:</u>	<u>Possible cause(s):</u>	<u>Action:</u>
Power unit doesn't run when "UP" button is pressed.	Low battery voltage.	Test the battery voltage with a voltmeter; verify that the green LED on the motor relay is lit.
	Bad or loose pushbutton contact, or a break in the wiring of the "RAISE" circuit.	Check contact block and wiring visually and with a meter.
	Upper-travel limit switch is engaged or bad.	Adjust the limit if engaged. If not, test the switch and wiring with meter.
Motor runs, platform doesn't move. Power unit not noisy.	Bad motor relay coil.	Test with meter; replace if bad.
	Inadequate hydraulic fluid level.	Check contact block and wiring visually and with a meter.
Motor hums or pump squeals, but the platform does not move, or the platform moves only slowly.	Ensure that the reservoir is filled to within 1½" when the lift is fully lowered. (See "Power Unit Operation" for the hyd. fluid spec.)	Consult factory.
	Pump is failing to build pressure. See last paragraph, above.	Same as above.
	Pressure relief is opening at full pressure.	Check for structural damage or binding of the scissor legs, etc. Check for platform overload condition.
Platform raises, then drifts down. Spongy or jerky platform movement.	Contamination holding open the lowering valve or the check valve.	Install the maintenance props, remove and inspect the valve. Clean per instructions in "Power Unit Operation."
	See last paragraph, above.	Same as above.
Platform won't lower.	Excessive air in the hydraulic cylinders.	Install the maintenance props. Bleed air per procedure described in "Power Unit Operation."
	Under-platform guard switch is engaged or a wire to it is broken (if applicable).	Check that the guard plate is hanging freely. Adjust if necessary. Inspect visually, check with multimeter. Repair as needed.
	Bad or loose pushbutton contact, or a break in the wiring of the "RAISE" circuit.	Check contact block and wiring visually and with a meter.
Platform lowers too slowly.	Solenoid coil is bad.	Check with a multimeter on diode-check function. (Reading for ohms will not provide an accurate test of the coil.)
	Physical blockage of the structure.	Inspect for foreign material or objects that might block the leg set or its rollers.
	Solenoid valve, flow control, or suction hose screen plugged.	Install the maintenance props, remove and inspect the valve. Clean per instructions in "Power Unit Operation."
	Velocity fuse locking (platform not moving, or only slowly creeping down). Same as last paragraph, above.	Same as for jerky platform movement.
Platform lowers too quickly.	Pinched hose.	Check pressure, supply, and return hoses for kinks.
	Flow control spool sticking.	Remove the plug from the manifold port marked FC; push down on the center of the flow spool to ensure it is not stuck. Pull and clean the spool if necessary.

SAFETY LABEL IDENTIFICATION -- EHLTG-WCL

* Product safety signs or labels should be periodically inspected and cleaned by the product users as necessary to maintain good legibility for safe viewing distance -- ANSI 535.4 (10.21). Contact the manufacturer for replacement



Inside by Fill Plug

ISO 32 / 150 SUS		
HYDRAULIC OIL OR NON-SYNTHETIC TRANSMISSION FLUID		
ACEITE HIDRAULICO O LIQUIDOS DE TRANSMISION NO-SINTETICOS		
HUILE DU LIQUIDE HYDRAULIQUE NON-SYNTHETIQUE		
<small>VESTIL MANUFACTURING CORPORATION • Phone (202) 685-7588 • Fax (202) 685-7589 • www.vestil.com</small>		

206

Above Maintenance Pin Both Sides

MAINTENANCE STOP	PARADA DE MANTENIMIENTO	BLOK D'ENTRETIEN
<small>206</small>		

223

Both Sides

▲ WARNING	▲ ADVERTENCIA	▲ AVERTISSEMENT
KEEP CLEAR OF PINCH POINT	MANTENGASE ALEJADO DEL PUNTO DE CORTE	SE TENIR À DISTANCE DU POINT DE PINCEMENT
<small>VESTIL MANUFACTURING CORPORATION • Phone (202) 685-7588 • Fax (202) 685-7589 • www.vestil.com</small>		

208

Both Sides

▲ WARNING	▲ ADVERTENCIA	▲ AVERTISSEMENT
SEE INSTRUCTIONS FOR PROPER USE	VERIFICAR LAS INSTRUCCIONES DE USO	VOIR LES INSTRUCTIONS D'UTILISATION
DO NOT OPERATE WITHOUT PROPER TRAINING	NO OPERAR SIN LA DEBIDA FORMACION	NE PAS UTILISER SANS LA FORMATION APPROPRIÉE
<small>VESTIL MANUFACTURING CORPORATION • Phone (202) 685-7588 • Fax (202) 685-7589 • www.vestil.com</small>		

269

RAISE EL AUMENTO AUGMENTATION

376

LOWER MAS BAJO PLUS BAS

377

DANGER
CORROSIVE MATERIAL
PELIGRO
MATERIAL CORROSIVO
DANGER
MATIÈRES CORROSIVES

295

MADE IN U.S.A.
2 x 2

Alternating Corners

▲ WARNING	▲ ADVERTENCIA	▲ AVERTISSEMENT
SECURE FRAME TO FLOOR	ASEGURE EL BASTIDOR AL PISO	FIXER SOLIDEMENT LE CADRE AU PLANCHER
<small>VESTIL MANUFACTURING CORPORATION • Argolis, Indiana USA • Phone (202) 685-7588 • www.vestil.com</small>		

204

labels.

POWERED PRODUCTS' WARRANTY

ONE YEAR LIMITED WARRANTY

The manufacturer warrants for the original purchaser against defects in materials and workmanship under normal use one year after date of shipment (not to exceed 15 months after date of manufacture). Any part that is determined by the manufacturer to be defective in material or workmanship and returned to the factory, shipping costs prepaid, will be, as the exclusive remedy, repaired or replaced at our option. Labor costs for warranty repairs and/or modifications are not covered unless done at manufacturer's facilities or pre-approved in advance by the manufacturer. Any modifications performed without written approval of the manufacturer may void warranty. This limited warranty gives purchaser specific legal rights which vary from state to state.

All specifications are subject to change without notice.

LIMITATION OF LIABILITY

To the extent allowable under applicable law, the manufacturer's liability for consequential and incidental damages is expressly disclaimed. The manufacturer's liability in any event is limited to, and shall not exceed, the purchase price paid. Misuse or modification may void warranty.

Warranty does not cover labor or consequential damages including, but not limited to, business interruption costs, lost profits, or lost business opportunities.

WARRANTY DISCLAIMER

The manufacturer has made a diligent effort to accurately illustrate and describe their products. However, such illustrations and descriptions are for the sole purpose of identification, and do not express or imply a warranty that the products are merchantable or fit for a particular purpose, or that the products will necessarily conform to the illustrations or descriptions.

The provisions of the warranty shall be construed and enforced in accordance with the Uniform Commercial Code and laws as enacted in the State of Indiana.

DISPOSITION

Our company will make a good faith effort for prompt correction or other adjustment with respect to any product that proves to be defective within the Limited Warranty Period. Warranty claims must be made in writing within said year.