

Loading Dock Solutions

OWNER'S MANUAL

DOCK BARRICADE MODEL DJG-100

| Contents | |
|---------------------------------|---|
| Receiving Instructions | 1 |
| Warranty | 1 |
| Installation Instructions | 1 |
| Bolt Hole Pattern | 1 |

RECEIVING INSTRUCTIONS

Every unit is thoroughly tested and inspected prior to shipment. However, it is possible that the unit may incur damage during transit. If damage is noticed when unloading, make a note of it on the BILL OF LADING. Remove all packing and strapping material, then inspect the unit again for damage. **IF DAMAGE IS EVIDENT, FILE A CLAIM WITH THE CARRIER IMMEDIATELY!**

WARRANTY

This product is warranted for 90 DAYS from date of purchase to be free of manufacturing defects in material and workmanship. The manufacturer's obligation hereunder is limited to repairing such products during the warranty period, provided the product is sent prepaid back to the factory.

This warranty does not cover normal wear of parts or damage resulting from any of the following: negligent use or misuse of the product, use or application contrary to installation instructions, or disassembly, repair or alteration by any person prior to authorization from a factory representative.

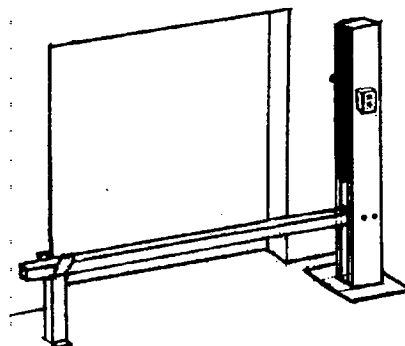
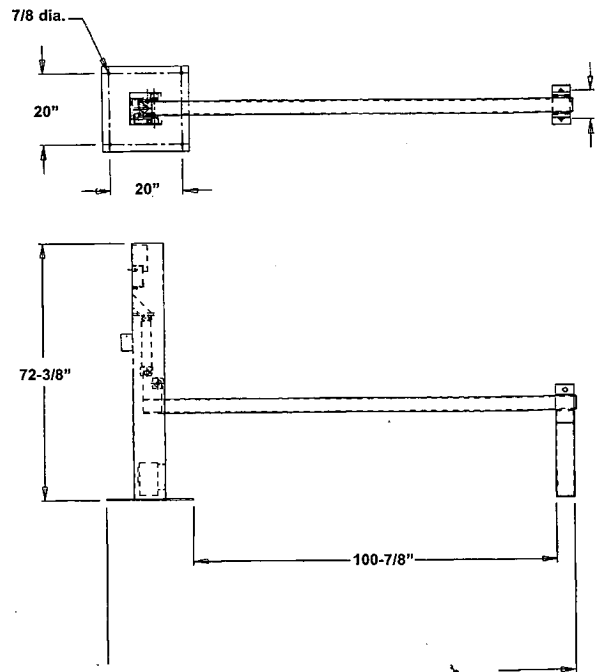
INSTALLATION INSTRUCTIONS

The dock barricade is prewired for connection to a 115 VAC, single phase power supply. Simply insert the plug into any available 15 amp or 20 amp duplex receptacle. If an extension cord is to be used, a minimum of 14 AWG wire is recommended, and it should not exceed 50 ft. in length.

The barricade arm post and the barricade arm's support post are to be securely bolted to a concrete floor using 3/4" concrete anchor bolts. Locate the barricade arm post and the arm's support post each in the desired location. The anchor bolt holes can be drilled, and the bolts driven in, while the posts are in position.

Consult your buildings architectural drawings for information on the depth and strength of the concrete floor in order to determine the length of the bolts and their recommended torque values.

BOLT HOLE PATTERN



**DOCK BARRICADE
MODEL DJG-100**